

## Product datasheet for **BM5086P**

### Synaptopodin (SYNPO) Mouse Monoclonal Antibody [Clone ID: G1D4]

#### Product data:

Product Type:	Primary Antibodies
Clone Name:	G1D4
Applications:	IF, IHC, WB
Recommended Dilution:	<b>Immunofluorescence.</b> <b>Immunohistochemistry on Frozen Sections.</b> <b>Immunohistochemistry on Paraffin Sections</b> (After microwave treatment). <b>Working Dilutions:</b> 1/5-1/10 for 1h at RT. <b>Western blot:</b> 0.1-0.5 µg/ml. The antibody also reacts with a 44 kD degradation fragment of Synaptopodin.
Reactivity:	Bovine, Guinea Pig, Gerbil, Human, Mouse, Rat
Host:	Mouse
Isotype:	IgG1
Clonality:	Monoclonal
Immunogen:	Isolated Rat kidney glomeruli.
Specificity:	The antibody reacts specifically with Synaptopodin. It recognizes differentiated podocytes (glomerular visceral epithelial cells) <i>in vivo</i> and <i>in vitro</i> (weaker additional reaction with arterial endothelial cells), co-localization with alpha-Actinin. Does <b>not</b> react with parietal cells. Reacts with a subset of exclusively telencephalic synapses. Differentiation dependent expression during postnatal maturation of Rat brain. Differentiation dependent expression in cultured hippocampal neurons. <b>Negative Species:</b> Rabbit, Frog and Chicken.
Formulation:	Final Solution contains PBS, pH 7.4 with 0.09% Sodium Azide as preservative and 0.5% BSA as stabilizer State: Aff - Purified State: Lyophilized purified Ig fraction
Reconstitution Method:	Restore with 1 ml distilled water
Purification:	Affinity Chromatography on Protein A
Conjugation:	Unconjugated



[View online »](#)

**Storage:** Prior to reconstitution store at 2-8°C.  
Following reconstitution store undiluted at 2-8°C for one month  
or (in aliquots) at -20°C for longer.  
Avoid repeated freezing and thawing.

**Stability:** Shelf life: one year from despatch.

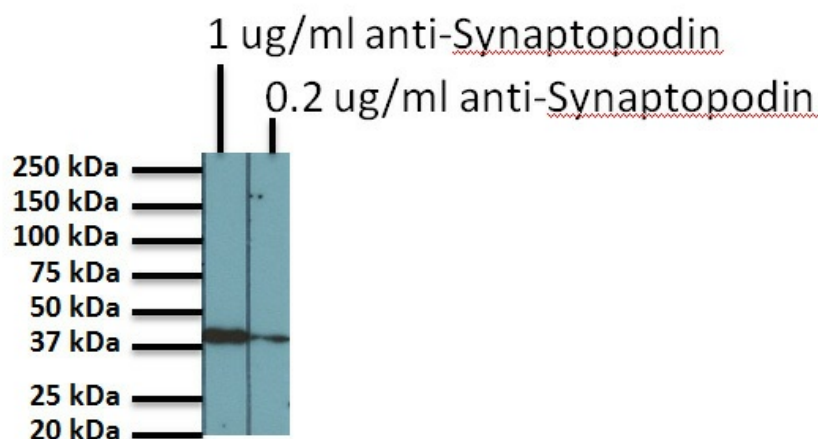
**Gene Name:** synaptopodin

**Database Link:** [Entrez Gene 11346 Human](#)  
[Q8N3V7](#)

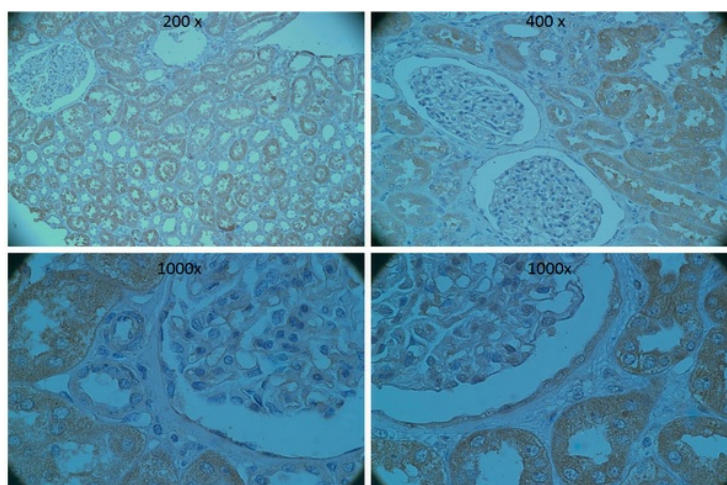
**Background:** Synaptopodin, a prolin-rich actin-binding protein with 2 binding sites for actin, represents a new class of actin-binding proteins which has first been localized in podocytes and a subset of telencephalic postsynaptic densities. In human tissue synaptopodin has a molecular weight of 73.7 kD and pI of 9.38 (calculated from sequence data); in mouse the corresponding data are 74 kD, pI 9.27. In SDS-PAGE the antigen appears as 100 kD polypeptide in brain and 110 kD polypeptide in kidney (the difference might be attributed to posttranslational modifications).

**Synonyms:** KIAA1029

### Product images:



Western blotting for Synaptopodin on Human kidney lysate using Acris anti-SYNPO monoclonal antibody. The antibody reacts with a band of approximate size 44kDa that is thought to result from the breakdown of the full length protein.



Staining for Synaptopodin on formalin fixed paraffin embedded kidney tissue sections using anti-SYNPO monoclonal antibody following antigen retrieval. Indirect immunoperoxidase staining. DAB substrate, hematoxyline counterstain.