

## Product datasheet for **BM508**

### Insulin (INS) (+Proinsulin) Mouse Monoclonal Antibody [Clone ID: D3E7 (5B6/6)]

#### Product data:

Product Type:	Primary Antibodies
Clone Name:	D3E7 (5B6/6)
Applications:	ELISA, IHC
Recommended Dilution:	<b>ELISA:</b> This antibody is suitable for use as a Detection antibody with BM507 as the Capture antibody. <b>Immunohistochemistry on Frozen Sections</b> (Ref.1). <b>Immunohistochemistry on Paraffin Sections:</b> 1/100-1/300.
Reactivity:	Bovine, Human, Mouse, Porcine, Rat
Host:	Mouse
Isotype:	IgG1
Clonality:	Monoclonal
Immunogen:	Recombinant Human Insulin.
Specificity:	This antibody recognizes both Insulin and Proinsulin, but does not react with free C-Peptide.
Formulation:	PBS State: Purified State: Liquid purified IgG fraction Preservative: 0.09% Sodium Azide
Concentration:	lot specific
Purification:	Affinity Chromatography on Protein A
Conjugation:	Unconjugated
Storage:	Store undiluted at 2-8°C for one month or (in aliquots) at -20°C for longer. Avoid repeated freezing and thawing.
Stability:	Shelf life: one year from despatch.
Gene Name:	insulin
Database Link:	<a href="#">Entrez Gene 3630 Human P01308</a>



[View online »](#)

**Background:**

Insulin is one of the major regulatory hormones of intermediate metabolism throughout the body. The biological actions of this hormone involve integration of carbohydrate, protein, and lipid metabolism. Insulin enhances membrane transport of glucose, amino acids, and certain ions. It also promotes glycogen storage, formation of triglycerides and synthesis of proteins and nucleic acids. Immunocytochemical investigations have localized insulin in the B cells of pancreatic islets of Langerhans. Deficiency of insulin results in diabetes mellitus, one of the leading causes of morbidity and mortality in the general population. Insulin is also present in tumors of B cell origin such as insulinoma.

**Synonyms:**

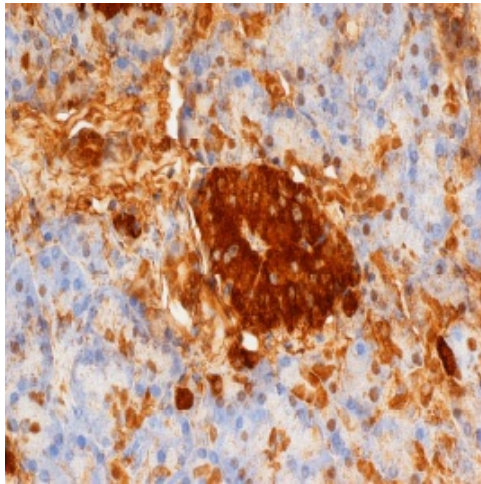
INS

**Protein Families:**

Druggable Genome, ES Cell Differentiation/IPS, Secreted Protein

**Protein Pathways:**

Insulin signaling pathway, Maturity onset diabetes of the young, mTOR signaling pathway, Oocyte meiosis, Progesterone-mediated oocyte maturation, Prostate cancer, Regulation of actin cytoskeleton, Regulation of autophagy, Type I diabetes mellitus, Type II diabetes mellitus

**Product images:**

Staining of Paraffin Embedded Human pancreas with Mouse anti Rat Insulin Antibody (Clone D3E7)