

Product datasheet for **BM5047P**

KRT13 Mouse Monoclonal Antibody [Clone ID: 1C7]

Product data:

Product Type:	Primary Antibodies
Clone Name:	1C7
Applications:	IF, IHC, WB
Recommended Dilution:	Immunofluorescence. Western blot: 1/100-1/1000. Immunohistochemistry on Frozen sections: 1/25-1/200 ABC as detection reagent.
Reactivity:	Human, Rat, Zebrafish
Host:	Mouse
Isotype:	IgG2a
Clonality:	Monoclonal
Immunogen:	Cytokeratin preparation from Human esophagus.
Specificity:	1C7 reacts exclusively with Cytokeratin 13 which is present in non-cornified squamous epithelia, except cornea, and transitional epithelial regions, with the exception of basal cell layers of some stratified epithelia.
Formulation:	PBS State: Purified State: Liquid purified IgG fraction Preservative: 0.09% Sodium Azide
Concentration:	lot specific
Conjugation:	Unconjugated
Storage:	Store undiluted at 2-8°C for one month or (in aliquots) at -20°C for longer. Avoid repeated freeze-thaw cycles.
Stability:	Shelf life: One year from despatch.
Gene Name:	keratin 13
Database Link:	Entrez Gene 3860 Human P13646



[View online »](#)

Background:

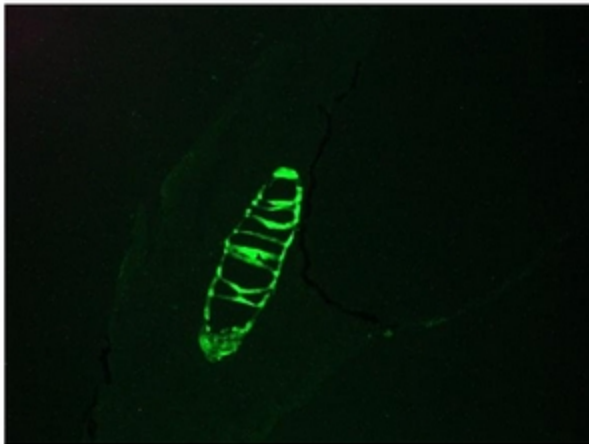
Cytokeratins are a subfamily of intermediate filament proteins and are characterized by a remarkable biochemical diversity, represented in human epithelial tissues by at least 20 different polypeptides. They range in molecular weight between 40 kDa and 68 kDa and isoelectric pH between 4.9-7.8.

The individual human cytokeratins are numbered 1 to 20.

The various epithelia in the human body usually express cytokeratins which are not only characteristic of the type of epithelium, but also related to the degree of maturation or differentiation within an epithelium. Cytokeratin subtype expression patterns are used to an increasing extent in the distinction of different types of epithelial malignancies. The cytokeratin antibodies are not only of assistance in the differential diagnosis of tumors using immunohistochemistry on tissue sections, but are also a useful tool in cytopathology and flow cytometric assays.

Synonyms:

CK-13, CK13, Keratin-13, KRT13, K13, KRT-13

Product images:

Immunofluorescence staining of a 7 days old zebrafish embryo.