

Product datasheet for **BM4501**

Lamin B1 (LMNB1) Mouse Monoclonal Antibody [Clone ID: 119D5-F1]

Product data:

Product Type:	Primary Antibodies
Clone Name:	119D5-F1
Applications:	ELISA, FC, IF, IHC, WB
Recommended Dilution:	ELISA. Flow cytometry: 1/100-1/200. Immunohistochemistry on Frozen Sections. Immunocytochemistry: 1/100-1/200 with Avidin-Biotinylated Horseradish peroxidase complex (ABC) as detection reagent. Western blot: 1/100-1/1000.
Reactivity:	Bovine, Canine, Human, Mouse, Rabbit, Rat, Sheep, Zebrafish
Host:	Mouse
Isotype:	IgG1
Clonality:	Monoclonal
Immunogen:	Purified Rat liver lamins. 119D5-F1 is a Mouse monoclonal IgG1/k antibody derived by fusion of P3/X63.Ag8.653 mouse myeloma cells with spleen cells from a BALB/c mouse.
Specificity:	The antibody Clone 119D5-F1 reacts with an epitope located C-terminal of residue 231 in Lamin B1.
Formulation:	PBS containing 0.09% Sodium Azide as preservative State: Purified State: Liquid purified Ig fraction
Concentration:	lot specific
Conjugation:	Unconjugated
Storage:	Store undiluted at 2-8°C for one month or (in aliquots) at -20°C for longer. Avoid repeated freezing and thawing.
Stability:	Shelf life: one year from despatch.
Predicted Protein Size:	67 kDa (Predicted)
Gene Name:	lamin B1



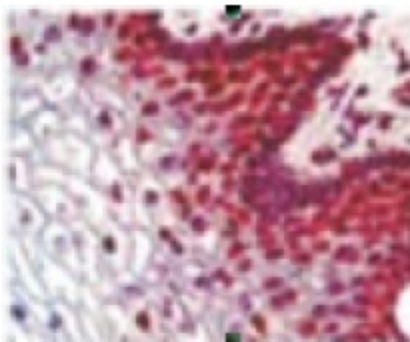
[View online »](#)

Database Link: [Entrez Gene 4001 Human P20700](#)

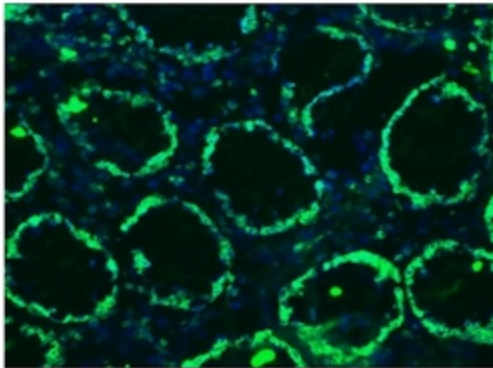
Background: Nuclear lamins form a network of intermediate-type filaments at the nucleoplasmic site of the nuclear membrane. Two main subtypes of nuclear lamins can be distinguished, i.e. A-type lamins and B-type lamins. The A-type lamins comprise a set of three proteins arising from the same gene by alternative splicing, i.e. lamin A, lamin C and lamin A_{pro}, while the B-type lamins include two proteins arising from two distinct genes, i.e. lamin B1 and lamin B2. Lamins play a crucial role in the maintenance of nuclear structure, gene regulation, and signaling from cytoplasm to nucleus. Mutations in lamins have been associated with a number of pathologies; the so-called laminopathies.

Synonyms: Lamin-B1, LMNB1, LMNB-1, LMN2, LMNB, Nuclear Envelope Marker

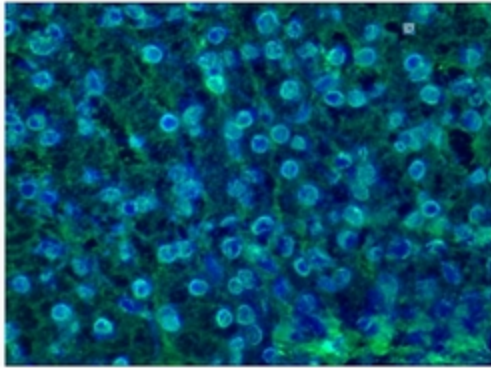
Product images:



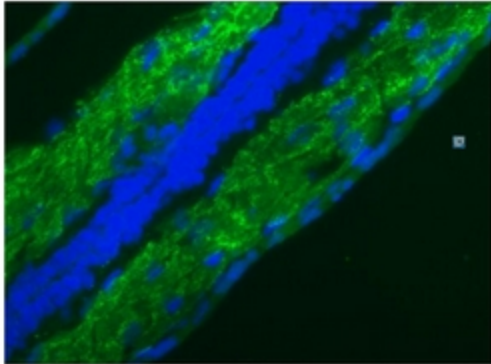
Immunohistochemistry: Lamin B1 antibody
Immunostaining of Human epidermis.



Immunohistochemistry on frozen sections of
human colon showing nuclear lamina staining in
epithelial and connective tissue cells.



Immunohistochemistry on frozen sections of swine liver showing nuclear lamina staining in hepatocytes.



Immunofluorescence staining of a 9 days old Zebrafish embryos. Frozen section fixed in Acteone/Methanol: 1/1. diluted at 1/100, incubated for 45 minutes at RT.