

Product datasheet for **BM4118**

Macrophages (Marginal Metallophils) Mouse Monoclonal Antibody [Clone ID: TRPM-3]

Product data:

Product Type: Primary Antibodies

Clone Name: TRPM-3

Applications: IHC

Recommended Dilution: Suitable for Immunohistochemistry on Frozen Sections:
0.25-0.5 µg/ml (1/400-1/800) when using an ABC amplification system.
Suggested Positive Control: Rat Spleen.

Reactivity: Rat

Host: Mouse

Isotype: IgG1

Clonality: Monoclonal

Immunogen: Peritoneal Macrophages.

Specificity: Recognises an epitope of a membrane protein which is associated with a receptor for glycoconjugates (Sialoadhesin).

Antigen Distribution:

Isolated Cells: TRPM-3 is negative with Monocytes and Granulocytes.

Tissue Sections: TRPM-3 stains marginal zone macrophages and marginal metallophils of the spleen strongly. It rarely reacts with cordal Macrophages in the red pulp and interdigitating cells in the periarterial lymphatic sheet of the spleen. In lymph nodes, only sinus Macrophages express the antigen. Moreover, it is expressed on macrophages in the synovial membrane, mucosa and submucosa of the gastrointestinal tract, twisted spindle-shaped macrophages of the omentum and on macrophages in the dermis and subcutaneous tissue. It is absent from macrophages in the thymus, Peyer's patches and from Langerhans cells in the skin.

Formulation: PBS, pH 7.2, with 0.01% Thimerosal as preservative and 10 mg/ml BSA as stabilizer.
State: Purified
State: Lyophilized purified Ig fraction.

Reconstitution Method: Restore with 0.5 ml distilled water.

Concentration: 0.2 mg/ml

Purification: Affinity Chromatography.



[View online »](#)

| | |
|---------------------|---|
| Conjugation: | Unconjugated |
| Storage: | Store the antibody at 2-8°C for one month or (in aliquots) at -20°C for longer. Do not freeze working dilutions Avoid repeated freezing and thawing. |
| Stability: | Shelf life: One year from despatch. |
| Background: | TRPM-3 is a specific cell surface marker useful for the identification of tissue fixed rat macrophages and macrophage subpopulations. It is particularly suitable for phenotyping macrophages of lymphoid organs, where it reacts with marginal zone macrophages and with marginal metallophils. It is also an interesting marker for studying autoimmune diseased tissues. TRPM-3 recognises an epitope of a membrane protein which is associated with a receptor for glycoconjugates (sialoadhesin). |
| Synonyms: | Macrophage marker |

Product images:

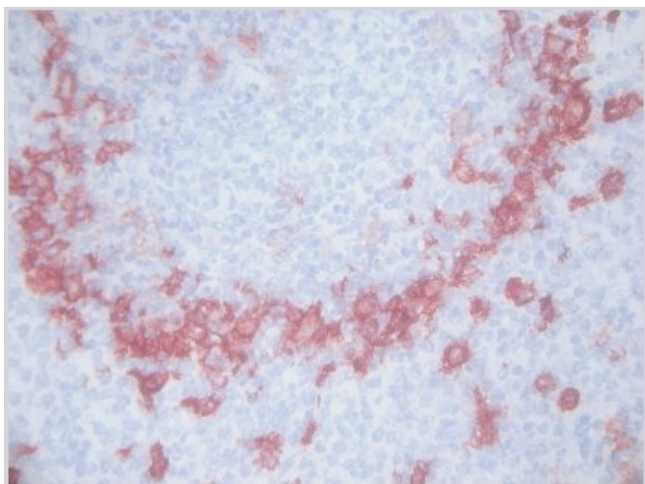


Figure 1. Immunohistochemistry on frozen sections using monoclonal antibody BM4118.