

## Product datasheet for **BM4114B**

### Iba1 (AIF1) Mouse Monoclonal Antibody [Clone ID: 1022-5]

#### Product data:

Product Type:	Primary Antibodies
Clone Name:	1022-5
Applications:	IHC
Recommended Dilution:	<b>Immunohistochemistry on Paraffin Sections:</b> 5 µg/ml (1/40). Pretreatment is not necessary. <i>Suggested Positive Control:</i> Human spleen. This antibody does not react on routinely processed Frozen Sections.
Reactivity:	Human, Rat, Porcine
Host:	Mouse
Isotype:	IgG2b
Clonality:	Monoclonal
Immunogen:	Purified Human recombinant AIF-1 Epitope is not further characterized.
Specificity:	Recognizes AIF-1. This antibody BM4114B reacts with activated Macrophages / Microglial cells.
Formulation:	PBS containing 5 mg/ml BSA as a stabilizer and 0.09% Sodium Azide as a preservative. Label: Biotin State: Lyophilized purified IgG fraction.
Reconstitution Method:	Restore by adding 0.5 ml distilled water.
Concentration:	0.2 mg/ml
Purification:	Affinity Chromatography.
Conjugation:	Biotin
Storage:	Store the original vial at 2-8°C, stock solution or aliquots thereof at -20°C. Avoid repeated thawing and freezing.
Stability:	Shelf life: one year from despatch.
Gene Name:	allograft inflammatory factor 1
Database Link:	<a href="#">Entrez Gene 199 Human P55008</a>



[View online »](#)

**Background:**

Allograft Inflammatory Factor-1 is a Ca<sup>2+</sup>-binding peptide produced by activated macrophages and microglial cells. It has been suggested that AIF-1 expression is associated with chronic inflammatory processes. AIF-1, like the Ca<sup>2+</sup>-binding peptides MRP8 and MRP14, is expressed by activated macrophages and might participate in a variety of pathogenic processes in the mammalian brain and in chronic transplant rejection. It has been shown to be expressed early and persistently in chronically rejecting cardiac allografts but not in cardiac syngrafts and host hearts. The recently described apoptosis-inducing factor AIF is not related to AIF-1.

**Synonyms:**

AIF-1, Protein G1, IBA1, Allograft inflammatory factor 1

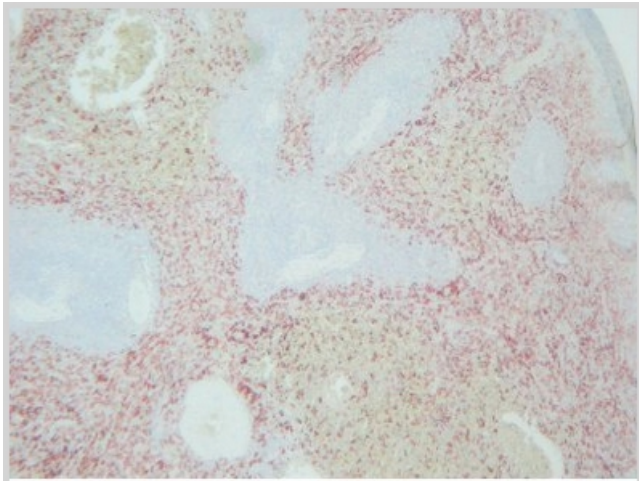
**Product images:**

Figure 1. AIF1 antibody staining of Human Spleen Paraffin Section.