

Product datasheet for **BM4111F**

CD68 Mouse Monoclonal Antibody [Clone ID: Ki-M7]

Product data:

Product Type:	Primary Antibodies
Clone Name:	Ki-M7
Applications:	FC
Recommended Dilution:	Flow Cytometry: Use 10 µl to label 10 ⁶ cells in 100 µl (Membrane permeabilisation is required). Clone KiM7 has been reported as being also suitable for use in Immunoprecipitation and Immunohistochemistry on Frozen Sections .
Reactivity:	Human
Host:	Mouse
Isotype:	IgG1
Clonality:	Monoclonal
Immunogen:	Cell suspensions of Human lymph node
Specificity:	CD68 antibody (Clone Ki-M7) Cat.-No BM4111F recognizes the 110KD integral membrane glycoprotein CD68 (Macrosialin) predominantly expressed on the intracellular lysosomes of monocytes and macrophages and to a lesser extent by dendritic cells and peripheral blood granulocytes.
Formulation:	PBS Label: FITC State: Liquid purified IgG fraction from Tissue Culture Supernatant Stabilizer: 1% BSA Preservative: 0.05% Sodium Azide Label: Fluorescein Isothiocyanate Isomer 1 Absorption emission: 495 nm / 528 nm
Purification:	Protein A Chromatography
Conjugation:	FITC
Storage:	Store the antibody undiluted at 2-8°C. DO NOT FREEZE! This product is photosensitive and should be protected from light.
Stability:	Shelf life: One year from despatch.



[View online »](#)

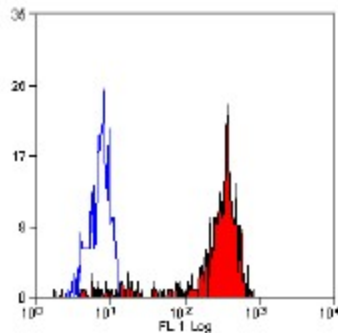
Gene Name: CD68 molecule

Database Link: [Entrez Gene 968 Human P34810](#)

Background: The CD68 antigen is a 37kD transmembrane protein that is post-translationally glycosylated to give a protein of 87-115kD. CD68 is specifically expressed by tissue macrophages, Langerhans cells and at low levels by dendritic cells. It could play a role in phagocytic activities of tissue macrophages, both in intracellular lysosomal metabolism and extracellular cell-cell and cell-pathogen interactions. It binds to tissue- and organ-specific lectins or selectins, allowing homing of macrophage subsets to particular sites. Rapid recirculation of CD68 from endosomes and lysosomes to the plasma membrane may allow macrophages to crawl over selectin bearing substrates or other cells. Elevated expression of CD68 has been demonstrated on CD34+ cells in various human malignancies, including several Acute Myeloid Leukaemia studies.

Synonyms: Gp110, Macrosialin, Macrophage marker

Product images:



Staining of human peripheral blood monocytes with Mouse anti Human CD68 antibody -FITC (BM4111F) following permeabilisation.