

Product datasheet for **BM4100B**

T Cells (Pan) Mouse Monoclonal Antibody [Clone ID: KI-T1R]

Product data:

Product Type:	Primary Antibodies
Clone Name:	KI-T1R
Applications:	FC, IHC
Recommended Dilution:	Immunohistochemistry on Frozen Sections: 0.25 µg/ml (1/800). Ki-T1R shows very characteristic staining patterns in lymphoid organs according to the T-cell distribution; paracortical T-cell zone of lymphnodes, periarteriolar T-cell zones of the spleen, T-cell nodules of the gastrointestinal tract and bone marrow, thymocytes with prevalence from thymus medulla. This antibody has been described to work in FACS .
Reactivity:	Rat
Host:	Mouse
Isotype:	IgG2a
Clonality:	Monoclonal
Immunogen:	Rat lymphocytes.
Specificity:	This antibody reacts with Rat B-lymphocytes. This Monoclonal antibody Ki-T1R is a pan-T-cell marker useful for the characterisation of lymphoid organs and for the study of the interaction of T-cells with other cell types e.g. Macrophages. Ki-T1R detects an epitope of a 161kD glycoprotein (4 bands of 36kD, 38kD, 40kD and 47kD under reducing conditions) which is located on the outer surface of cytoplasmic membranes. Ki-T1R detects approximately 80% of peripheral blood T-cells. It is negative on all other cell types.
Formulation:	PBS, pH 7.2 with 0.01% Thimerosal as preservatives and 10 mg/ml BSA as stabilizer. Label: Biotin State: Lyophilized purified Ig fraction.
Reconstitution Method:	Restore with 0.5 ml distilled water.
Concentration:	0.4 mg/ml
Purification:	Affinity chromatography.
Conjugation:	Biotin



[View online »](#)

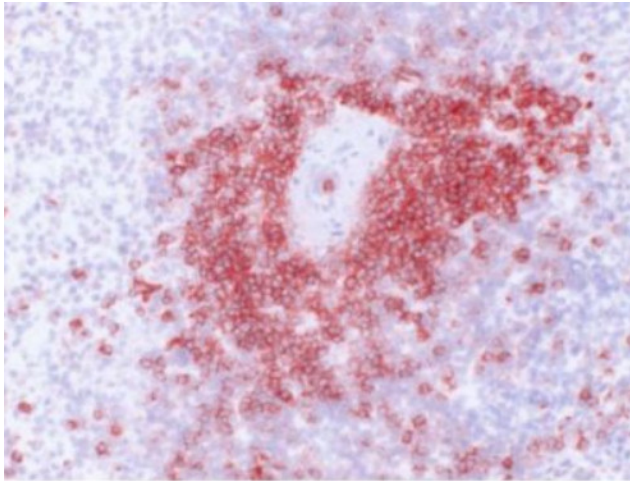
Storage: Store lyophilized at 2-8°C for 6 months or at -20°C long term.
 After reconstitution store the antibody undiluted at 2-8°C for one month or (in aliquots) at -20°C long term.
 Avoid repeated freezing and thawing.

Stability: Shelf life: one year from despatch.

Background: Monoclonal antibody Ki-T1R is a pan-T-cell marker useful for the characterisation of lymphoid organs and for the study of the interaction of T-cells with other cell types e.g. macrophages.

Synonyms: T-Cells, T Lymphocytes, T-lymphocytes

Product images:



Rat Spleen Frozen Section stained with Biotin conjugated T Cells Antibody Cat-No BM4100B (Clone Ki-T1R)

% Positive Peripheral Lymphocytes

Experiment	Ki-B1R	slg ⁺	Ki-T1R
1	28	16	70
2	15	21	80
3	18	13	83
4	18	19	76
5	21	16	79
n = 5	19 ±3	18 ±3	79 ±3

Unpublished data raised in the Institute of Pathology, Michaelisstrasse 11, 2300 Kiel, Germany.