

Product datasheet for **BM4086B**

Pecam1 Rat Monoclonal Antibody [Clone ID: ER-MP12]

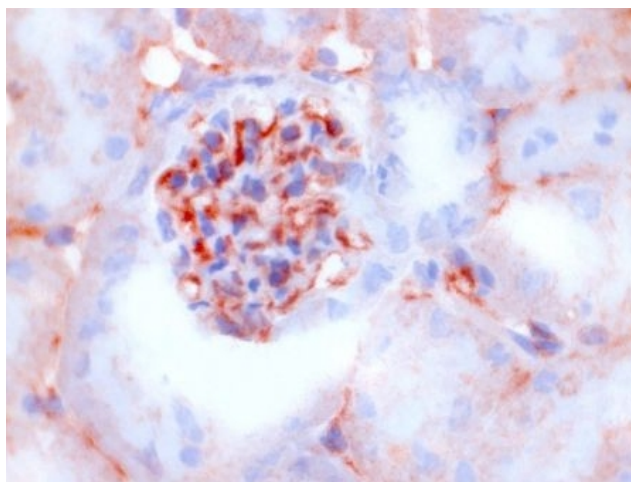
Product data:

Product Type:	Primary Antibodies
Clone Name:	ER-MP12
Applications:	FC, IHC
Recommended Dilution:	Immunohistochemistry on Acetone Fixed Frozen Sections: 0.4 µg/ml (1/1600). Immunohistochemistry on Formalin Fixed Paraffin Sections: 15 µg/ml (1/40). Antigen Retrieval with Proteinase K. Suggested Positive Control: Mouse spleen. Has been described to work in FACS analysis: 4 µg/ml.
Reactivity:	Mouse
Host:	Rat
Isotype:	IgG2a
Clonality:	Monoclonal
Immunogen:	Mouse macrophage precursor cells. The antigen is a glutaraldehyde (0.05%) and paraformaldehyde (1%) resistant 140kD surface glycoprotein (reducing and non reducing conditions). The antigen expression closely follows that of CD34.
Specificity:	Monoclonal antibody ER-MP12 recognizes PECAM-1, platelet / endothelial cell adhesion molecule 1. The antigen is found on major population of colony forming unit macrophage (CFU-M) precursor cells, subpopulation of pre CFU-M and monoblasts, precursor cells of granulocytes. Antigen Distribution on Isolated Cells: The antibody stains the surface of approximately 40% of freshly isolated bone marrow cells of adult mice and the majority of immortalized macrophage precursor cell lines (M1, RMB-1, RMB-3) corresponding to CFU-GM cells. The antibody detects pluri- and multipotent stem cells and prothymocytes as well as particular lymphoid cells in bone marrow and peripheral lymphoid organs. Antigen Distribution in Tissue Sections: The antibody stains the lymphopoietic islands in the spleen of newborn (day 12) and the bone marrow of adult mice. Capillary endothelial cells of adult mice also express the antigen.



Formulation:	PBS, pH 7.2 Label: Biotin State: Lyophilized purified IgG fraction Stabilizer: 5 mg/ml BSA Preservative: 0.05% Kathon
Reconstitution Method:	Restore with 0.5 ml distilled water (0.6 mg/ml stock solution).
Concentration:	0.6 mg/ml (after reconstitution)
Purification:	Affinity Chromatography
Conjugation:	Biotin
Storage:	Store lyophilized at 2-8°C for 6 months or at -20°C long term. After reconstitution store the antibody undiluted at 2-8°C for one month or (in aliquots) at -20°C long term. Avoid repeated freezing and thawing.
Stability:	Shelf life: one year from despatch.
Gene Name:	platelet/endothelial cell adhesion molecule 1
Database Link:	Entrez Gene 18613 Mouse Q08481
Background:	Anti-PECAM-1 is a general marker for the detection of a major population of haematopoietic stem cells and is useful for the accumulation of early murine macrophage precursors from bone marrow cell suspensions by FACS. An even more precise characterization of such isolated and concentrated precursor cells is achieved when ER-MP12 is combined with other markers like ER-MP20 (anti Ly-6C) or ER-MP58. The ER-MP12 antigen is also expressed by endothelial cells.
Synonyms:	PECAM-1, EndoCAM, GPIIA'

Product images:



Immunohistochemical staining on Mouse Kidney Frozen Sections using CD31 antibody clone ER-MP12.