

Product datasheet for **BM4083**

Surfactant protein D (SFTPD) (Conformational epitope) Mouse Monoclonal Antibody [Clone ID: IIE11 (SPDE)]

Product data:

Product Type:	Primary Antibodies
Clone Name:	IIE11 (SPDE)
Applications:	ELISA, IHC, WB
Recommended Dilution:	Immunohistochemistry on Frozen Sections: 2 µg/ml (1/250) Does not react on routinely processed paraffin sections. <i>Recommended Positive Control:</i> Rat lung. Has been described to work in Western blots .
Reactivity:	Human, Rat
Host:	Mouse
Isotype:	IgG2b
Clonality:	Monoclonal
Immunogen:	Purified Rat Surfactant protein D from bronchoalveolar lavage.
Specificity:	SPDE recognizes a conformational epitope of SP-D. Clone SPDE is a reclone from clone IIE11, with identical reactivity. Antigen Distribution on Tissue Sections: Alveolar type II cells, alveolar macrophages, two types of Clara cells SP-A+ and SP-A-, and extracellular deposits. Alveolar type III cells stain negative. No reaction on rat skin, colon, kidney and liver.
Formulation:	Stock solution contains PBS, pH 7.2 with 0.09% Sodium Azide as preservative and 5 mg/ml BSA as stabilizer. State: Purified State: Lyophilized purified IgG fraction
Reconstitution Method:	Restore by adding 0.5 ml distilled water (= 0.5 mg/ml Stock Solution).
Concentration:	0.5 mg/ml
Purification:	Affinity Chromatography.
Conjugation:	Unconjugated
Storage:	Store original vial at 2-8°C and stock solution or aliquots thereof at -20°C. Avoid repeated thawing and freezing.



[View online »](#)

Stability: Shelf life: one year from despatch.

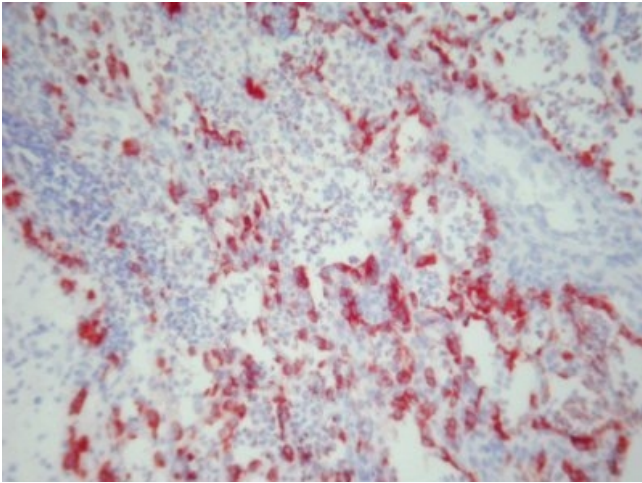
Gene Name: surfactant protein D

Database Link: [Entrez Gene 6441 Human P35247](#)

Background: Surfactant Protein D (SP-D) is a Ca²⁺-dependent carbohydrate-binding protein and is structurally similar to other C-type mammalian lectins, such as conglutinin and SP-A. It has a molecular size of approximately 43kDa in its reduced state, 620kDa in non-dissociating conditions. SP-D enhances the production of oxygen radicals by rat alveolar macrophages and regulates some actions of SP-A, which is the most abundant surfactant protein. SP-D is synthesized and secreted by alveolar epithelial type II cells.

Synonyms: Lung surfactant protein D, SP-D, PSP-D, PSPD, SFTP4, Collectin-7, COLEC7

Product images:



Immunohistochemical staining of Rat Lung Frozen Section using antibody Clone IIE11.