

Product datasheet for **BM4066**

hCG beta (CGB3) Mouse Monoclonal Antibody [Clone ID: H6]

Product data:

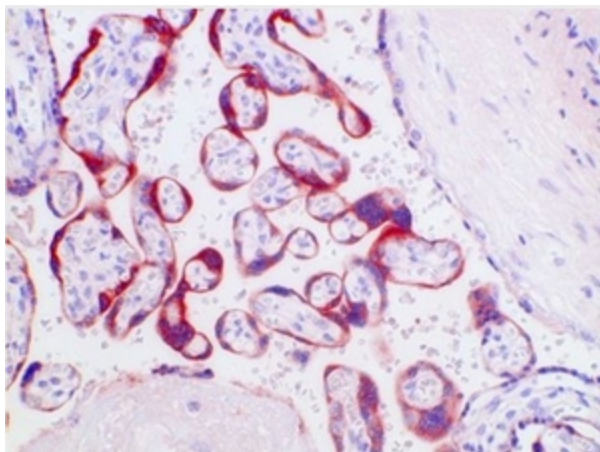
Product Type:	Primary Antibodies
Clone Name:	H6
Applications:	ELISA, IHC
Recommended Dilution:	Immunohistochemistry on Frozen Sections: Does not react on routinely processed frozen sections. Immunohistochemistry on Paraffin Sections: 2 µg/ml (1/200). Proteinase K pretreatment for antigen retrieval is recommended. It works also in ELISA . <i>Suggested Positive Control:</i> Human placenta.
Reactivity:	Human
Host:	Mouse
Isotype:	IgG1
Clonality:	Monoclonal
Specificity:	This Monoclonal antibody Clone h6 recognizes β-HCG, a well defined oncofetal protein of 36.7 kDa m.w. associated with pregnancy and some cancers. Raised serum levels for HCG are found in teratogenic carcinomas and trophoblastic tumors and occasionally in gastrointestinal, urogenital, bronchial or mammary carcinomas, and in lymphomas.
Formulation:	PBS, pH 7.2 with 10 mg/ml BSA as a stabilizer and 0.01% Thimerosal as a preservative State: Purified State: Lyophilized purified Ig fraction
Reconstitution Method:	Restore with 0.5 ml distilled water.
Concentration:	0.4 mg/ml (after reconstitution)
Purification:	Affinity Chromatography
Conjugation:	Unconjugated
Storage:	Prior to reconstitution store at 2-8°C. Following reconstitution store undiluted at 2-8°C for one month or (in aliquots) at -20°C for longer. Avoid repeated freezing and thawing.
Stability:	Shelf life: one year from despatch.



[View online »](#)

Gene Name:	chorionic gonadotropin beta subunit 3
Database Link:	Entrez Gene 1082 Human P0DN86
Background:	Human gonadotropin is a glycoprotein of 36.7kDa consisting of two subunits. The α -chain (MW 14.5 kD) is common to three other glycoprotein hormones (TSH, FSH, LH) whereas the β -chain (22.2kD) is more different. The β -chain of HCG and LH (lutrophin) have sequence homology in the first 112 amino acids and differ at the C-terminal end consisting of 24 amino acids.
Synonyms:	Choriogonadotropin subunit beta, CGB, CGB3, beta hCG, hCG-beta
Note:	<p>Protocol with frozen, ice-cold acetone-fixed sections: The whole procedure is performed at room temperature</p> <ol style="list-style-type: none">1. Wash in PBS2. Block endogenous peroxidase3. Wash in PBS4. Block with 10% normal goat serum in PBS for 30min. in a humid chamber5. Incubate with primary antibody (dilution see datasheet) for 1h in a humid chamber6. Wash in PBS7. Incubate with secondary antibody (peroxidase-conjugated goat anti mouse IgG+IgM (H+L) minimal-cross reaction to human) for 1h in a humid chamber8. Wash in PBS9. Incubate with AEC substrate (3-amino-9-ethylcarbazol) for 12min.10. Wash in PBS11. Counterstain with Mayer's hemalum. <p>Protocol with formalin-fixed, paraffin-embedded sections: The whole procedure is performed at room temperature</p> <ol style="list-style-type: none">1. Deparaffinize and rehydrate tissue section2. Place slide in a cuvette with 250ml 0.01M citrate buffer, pH 6.03. Heat slide in a microwave oven for 2 x 7min. at 700 Watt4. Leave slide in the buffer for 20min for cooling5. Wash in distilled water6. Block endogenous peroxidase7. Wash in PBS8. Block with 10% normal goat serum in PBS for 30min. in a humid chamber9. Incubate with primary antibody (dilution see datasheet) for 1h in a humid chamber10. Wash in PBS11. Incubate with secondary antibody (peroxidase-conjugated goat anti mouse IgG+IgM (H+L) minimal-cross reaction to human) for 1h in a humid chamber12. Wash in PBS13. Incubate with AEC substrate (3-amino-9-ethylcarbazol) for 12min.14. Wash in PBS15. Counterstain with Mayer's hemalum.

Product images:



BM4066 CD163 antibody staining of Paraffin Human Placenta Section (Clone h6)