

## Product datasheet for **BM4062**

### alpha 1 Antichymotrypsin (SERPINA3) Mouse Monoclonal Antibody [Clone ID: ACT14C7]

#### Product data:

Product Type:	Primary Antibodies
Clone Name:	ACT14C7
Applications:	IHC
Recommended Dilution:	<b>Immunohistochemistry on Frozen Sections:</b> 0.16 µg/ml (1/2500). <b>Immunohistochemistry on Paraffin Sections:</b> 0.16 µg/ml (1/2500), Microwave pretreatment for antigen retrieval is recommended. <b>Suggested Positive Control:</b> Human tonsil.
Reactivity:	Human
Host:	Mouse
Isotype:	IgG1
Clonality:	Monoclonal
Specificity:	This antibody recognizes alpha-1 Antichymotrypsin in paraffin embedded and frozen Human cells and tissues. Monocytes and macrophages are recognized in tonsils.
Formulation:	PBS buffer pH 7.2 containing 0.1% Kathon as preservative and 5 mg/ml BSA as stabilizer State: Aff - Purified State: Lyophilized purified Ig fraction
Reconstitution Method:	Restore with 0.5 ml distilled water.
Concentration:	0.4 mg/ml (after reconstitution)
Purification:	Affinity Chromatography
Conjugation:	Unconjugated
Storage:	Store lyophilized at 2-8°C for 6 months or at -20°C long term. After reconstitution store the antibody undiluted at 2-8°C for one month or (in aliquots) at -20°C long term. Avoid repeated freezing and thawing.
Stability:	Shelf life: one year from despatch.
Gene Name:	serpin family A member 3



[View online »](#)

**Database Link:** [Entrez Gene 12 Human P01011](#)

**Background:** The protein is a plasma protease inhibitor and member of the serine protease inhibitor class. Polymorphisms in this protein appear to be tissue specific and influence protease targeting. Variation in this protein's sequence have been implicated in Alzheimer's disease, and deficiency of this protein has been associated with liver disease. Mutations have been identified in patients with Parkinson disease and chronic obstructive pulmonary disease.

**Synonyms:** SERPINA3, AACT, GIG24, GIG25

**Note:** Protocol: **Protocol with frozen, ice-cold acetone-fixed sections:**

The whole procedure is performed at room temperature

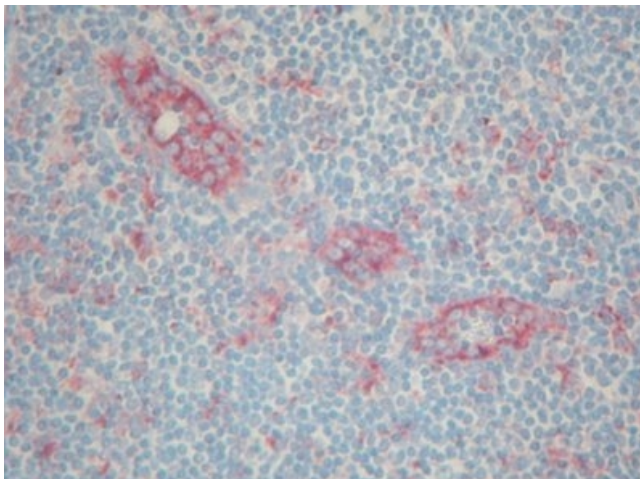
1. Wash in PBS
2. Block endogenous peroxidase
3. Wash in PBS
4. Block with 10% normal goat serum in PBS for 30min. in a humid chamber
5. Incubate with primary antibody (dilution see datasheet) for 1h in a humid chamber
6. Wash in PBS
7. Incubate with secondary antibody (peroxidase-conjugated goat anti mouse IgG+IgM (H+L) minimal-cross reaction to human) for 1h in a humid chamber
8. Wash in PBS
9. Incubate with AEC substrate (3-amino-9-ethylcarbazol) for 12min.
10. Wash in PBS
11. Counterstain with Mayer's hemalum

**Protocol with formalin-fixed, paraffin-embedded sections:**

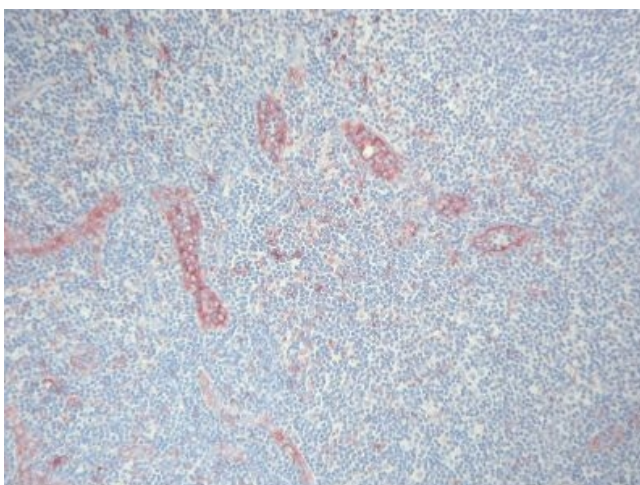
The whole procedure is performed at room temperature

1. Deparaffinize and rehydrate tissue section
2. Place slide in a cuvette with 250ml 0.01M citrate buffer, pH 6.0
3. Heat slide in a microwave oven for 2 x 7min. at 700Watt
4. Leave slide in the buffer for 20min for cooling
5. Wash in distilled water
6. Block endogenous peroxidase
7. Wash in PBS
8. Block with 10% normal goat serum in PBS for 30min. in a humid chamber
9. Incubate with primary antibody (dilution see datasheet) for 1h in a humid chamber
10. Wash in PBS
11. Incubate with secondary antibody (peroxidase-conjugated goat anti mouse IgG+IgM (H+L) minimal-cross reaction to human) for 1h in a humid chamber
12. Wash in PBS
13. Incubate with AEC substrate (3-amino-9-ethylcarbazol) for 12min.
14. Wash in PBS
15. Counterstain with Mayer's hemalum

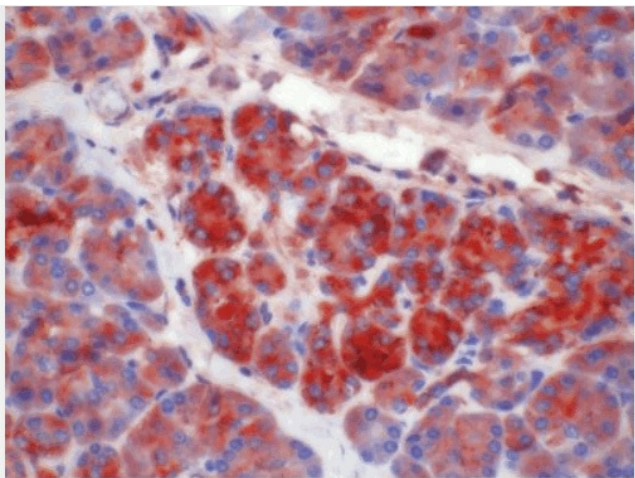
**Product images:**



BM4062 ACT antibody staining of Human Tonsil Paraffin Section.



BM4062 ACT antibody staining of Human Tonsil Paraffin Section.



BM4062 ACT antibody staining of Human pancreas Paraffin Section.