

Product datasheet for **BM4057B**

Endothelial Cells Rat Monoclonal Antibody [Clone ID: 1F10]

Product data:

Product Type:	Primary Antibodies
Clone Name:	1F10
Applications:	IHC
Recommended Dilution:	Immunohistochemistry on Frozen sections: 2 µg/ml (1:200). <i>Positive control: Human placenta.</i> Does not react on routinely processed paraffin sections.
Reactivity:	Human
Host:	Rat
Isotype:	IgG2a
Clonality:	Monoclonal
Immunogen:	Cultured HUVECs
Specificity:	This antibody recognizes an antigen on human continuous blood endothelial cells which are fully differentiated. The antibody staining is restricted to endothelial cells and does not stain any other cell in tissues or in peripheral blood. On sinusoidal endothelial cells of the liver or lymphatic organs the antigen is inconsistently expressed or absent.
Formulation:	Phosphate buffered saline pH 7.2 Label: Biotin State: Lyophilized affinity purified Ig fraction Stabilizer: 10 mg/ml bovine serum albumin Preservative: 0.01% thimerosal
Reconstitution Method:	Reconstitute by adding 0.5 ml distilled water.
Conjugation:	Biotin
Storage:	Store lyophilized at 2-8°C. After reconstitution store the antibody undiluted at 2-8°C for one month or (in aliquots) at -20°C long term. Avoid repeated freezing and thawing.
Stability:	Shelf life: one year from despatch.



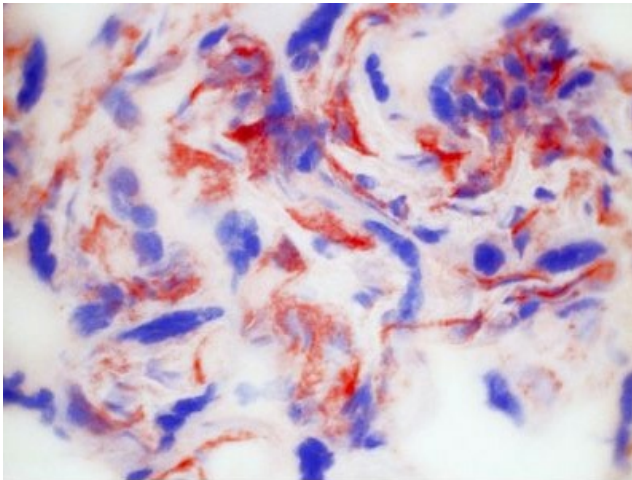
[View online »](#)

Background:

The antigen is found in variable numbers on freshly isolated umbilical vein endothelial cells (HUVECs). Antigen expression on cultured HUVECs is dependent on the culture conditions. Best results were obtained (40 - 70% pos.) by daily renewal of FCS containing medium supplemented with endothelial cell conditioned supernatant whereas commercially available endothelial cell media apparently have no influence on the antigen expression.

Synonyms:

Endothelial Cell marker

Product images:


Immunohistochemistry on frozen sections on Human placenta with Clone 1F10

Healthy Tissues			Diseased Tissues				
	Biopsies (n)	1F10 Staining		Biopsies (n)	1F10 Staining		
Spleen	Continuous EC	5	+++	Stomach CA	Stromal EC	10	+++
	Sinusoidal EC		0		Tumor cells		0
Liver	Continuous EC	3	+++	Mammary CA	Stromal EC	3	+++
	Sinusoidal EC		0/(+)		Tumor cells		0
Kidney	Continuous EC	2	+++	Acroangio-dermatitis	New vessel EC	4	+++
	Glomerular EC		+++		Angioma senile	New vessel EC	3
Skin	Continuous EC	4	+++	Granuloma pyogenicum	New vessel EC	4	+++
	Lymphatic EC		0/(+)		AIDS-Kaposi's sarcoma	Vascular slit cells	3
Lung		1	+++		Spindle cells		0/(+)
Myocardium		2	+++	Classical Kaposi's sarcoma	Vascular slit cells	1	(+)
Thymus	Cortex EC	2	+++		Spindle cells		0/(+)
	Medullary EC		+++	Hemangioma-sarcoma	Stromal EC	1	+++
Placenta		3	+++		Tumor cells		0

Distribution of 1F10 antigen in normal and tumor tissues