

## Product datasheet for **BM4048L**

### CD20 (MS4A1) (Cytopl. Dom.) Mouse Monoclonal Antibody [Clone ID: L26]

#### Product data:

Product Type:	Primary Antibodies
Clone Name:	L26
Applications:	IHC, WB
Recommended Dilution:	<b>Western blot.</b> <b>Immunohistochemistry on Frozen Sections.</b> <b>Immunohistochemistry on Formalin-Fixed, Paraffin-Embedded Sections:</b> 1/100-1/400 Pretreatment of deparaffinized tissue with heat-induced epitope retrieval using high pH target retrieval solution is recommended. Use Polymer anti Mouse/Rabbit IgG as a detection system. <i>Positive Control:</i> Tonsil, lymph node.
Reactivity:	Human
Host:	Mouse
Isotype:	IgG2a
Clonality:	Monoclonal
Immunogen:	Human tonsil B cells.
Specificity:	Recognizes Cellular Localization: Cell membrane/cytoplasmic.
Formulation:	State: Supernatant State: Tissue Culture Supernatant with 0.2% BSA and 15mM Sodium Azide.
Conjugation:	Unconjugated
Storage:	Store the antibody undiluted at 2-8°C.
Stability:	Shelf life: one year from despatch.
Gene Name:	membrane spanning 4-domains A1
Database Link:	<a href="#">Entrez Gene 931 Human P11836</a>



[View online »](#)

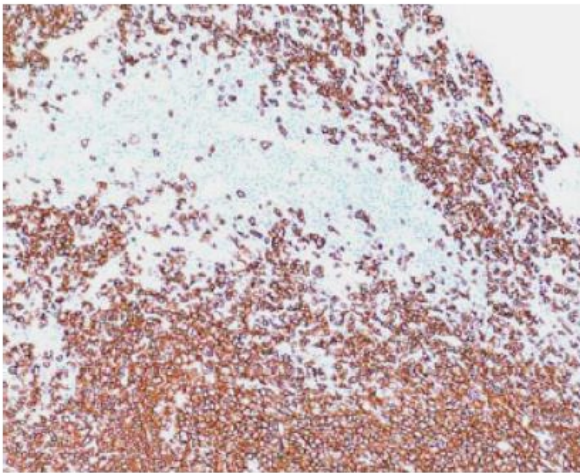
**Background:** CD20 is a non glycosylated protein with a molecular weight of 35 or 37 kDa depending on the degree of phosphorylation. Although not a member of the tetraspanin superfamily of cell surface receptors, it crosses the cell membrane four times. The CD20 antigen is present on human pre B lymphocytes and on B lymphocytes at all stages of maturation, except on plasma cells. Low level expression of the CD20 antigen has been detected on normal T lymphocytes. The CD20 molecule is involved in regulation of B cell differentiation, presumably via its reported function as a Ca<sup>++</sup> channel subunit.

**Synonyms:** MS4A1, Leu-16, Bp35, B-cell marker

**Protein Families:** Druggable Genome, Transmembrane

**Protein Pathways:** Hematopoietic cell lineage

### Product images:



Formalin-Fixed, Paraffin-Embedded Human human lymph node stained with CD20 antibody Cat.-No. BM4048L using peroxidase conjugate and DAB chromogen. Note the membrane and cytoplasmic staining of B-cells in mantle and follicle.