

## Product datasheet for **BM4046S**

### CD11a (ITGAL) Mouse Monoclonal Antibody [Clone ID: MEM-25]

#### Product data:

Product Type:	Primary Antibodies
Clone Name:	MEM-25
Applications:	FC, FN, IP
Recommended Dilution:	Flow Cytometry: 2 µg/ml. Immunoprecipitation (excellent antibody for immunoaffinity purification of LFA-1 complex). Functional Application (the antibody blocks binding of LFA-1 complex to ICAM-1).
Reactivity:	Human
Host:	Mouse
Isotype:	IgG1
Clonality:	Monoclonal
Immunogen:	Leucocytes from a patient suffering from a LGL-type leukaemia
Specificity:	The antibody reacts with CD11a (α-subunit of human LFA-1), a 170-180 kDa type I transmembrane glycoprotein expressed on B and T lymphocytes, monocytes, macrophages, neutrophils, basophils and eosinophils.
Formulation:	Phosphate buffered saline (PBS) with 15 mM sodium azide, approx. pH 7.4 State: Purified State: Liquid Ig fraction
Concentration:	lot specific
Purification:	Protein-A affinity chromatography
Conjugation:	Unconjugated
Storage:	Store the antibody at 2 - 8 °C up to one month or (in aliquots) at -20 °C for longer. Avoid repeated freezing and thawing.
Stability:	Shelf life: one year from despatch.
Gene Name:	integrin subunit alpha L
Database Link:	<a href="#">Entrez Gene 3683 Human P20701</a>



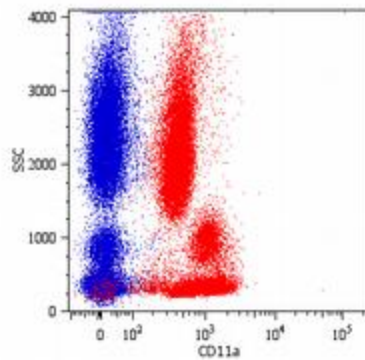
[View online »](#)

**Background:**

CD11a (LFA-1a) together with CD18 constitute leukocyte function-associated antigen 1 (LFA-1), the  $\alpha$ L $\beta$ 2 integrin. CD11a is implicated in activation of LFA-1 complex. LFA-1 is expressed on the plasma membrane of leukocytes in a low-affinity conformation. Cell stimulation by chemokines or other signals leads to induction the high-affinity conformation, which supports tight binding of LFA-1 to its ligands, the intercellular adhesion molecules ICAM-1, -2, -3. LFA-1 is thus involved in interaction of various immune cells and in their tissue-specific settlement, but participates also in control of cell differentiation and proliferation and of T-cell effector functions. Blocking of LFA-1 function by specific antibodies or small molecules has become an important therapeutic approach in treatment of multiple inflammatory diseases. For example, humanized anti-LFA-1 antibody Efalizumab (Raptiva) is being used to interfere with T cell migration to sites of inflammation; binding of cholesterol-lowering drug simvastatin to CD11a allosteric site leads to immunomodulation and increase in lymphocytic cholinergic activity.

**Synonyms:**

Integrin alpha-L, LFA1, LFA-1

**Product images:**

Surface staining of human peripheral blood cells with anti-human CD11a (MEM-25) PE.