

Product datasheet for **BM4046R**

CD11a (ITGAL) Mouse Monoclonal Antibody [Clone ID: MEM-25]

Product data:

Product Type:	Primary Antibodies
Clone Name:	MEM-25
Applications:	FC
Recommended Dilution:	Suitable for Flow Cytometry analysis of human blood cells using 20 µl reagent / 100 µl of whole blood or 10e6 cells in a suspension. The content of a vial (2 ml) is sufficient for 100 tests.
Reactivity:	Human
Host:	Mouse
Isotype:	IgG1
Clonality:	Monoclonal
Immunogen:	Leukocytes from a patient suffering from a LGL-type leukaemia.
Specificity:	The antibody MEM-25 reacts with CD11a (α-subunit of human LFA-1), a 170-180 kDa type I transmembrane glycoprotein expressed on B and T lymphocytes, monocytes, macrophages, neutrophils, basophils and eosinophils.
Formulation:	PBS containing 15 mM sodium azide as preservative and 0.2% (w/v) high-grade BSA (Protease free) as stabilizer. Label: PE State: Liquid purified IgG fraction. Label: Conjugated with R-Phycoerythrin under optimum conditions
Purification:	Size-exclusion chromatography
Conjugation:	PE
Storage:	Store the antibody in the dark at 2-8°C. Do Not Freeze! Avoid prolonged exposure to light.
Stability:	Shelf life: one year from despatch.
Gene Name:	integrin subunit alpha L
Database Link:	Entrez Gene 3683 Human P20701



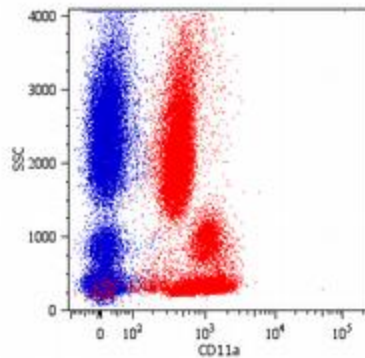
[View online »](#)

Background:

CD11a (LFA-1 α) together with CD18 constitute leukocyte function-associated antigen 1 (LFA-1), the α L β 2 integrin. CD11a is implicated in activation of LFA-1 complex. LFA-1 is expressed on the plasma membrane of leukocytes in a low-affinity conformation. Cell stimulation by chemokines or other signals leads to induction the high-affinity conformation, which supports tight binding of LFA-1 to its ligands, the intercellular adhesion molecules ICAM-1, -2, -3. LFA-1 is thus involved in interaction of various immune cells and in their tissue-specific settlement, but participates also in control of cell differentiation and proliferation and of T-cell effector functions. Blocking of LFA-1 function by specific antibodies or small molecules has become an important therapeutic approach in treatment of multiple inflammatory diseases. For example, humanized anti-LFA-1 antibody Efalizumab (Raptiva) is being used to interfere with T cell migration to sites of inflammation; binding of cholesterol-lowering drug simvastatin to CD11a allosteric site leads to immunomodulation and increase in lymphocytic cholinergic activity.

Synonyms:

Integrin alpha-L, LFA1, LFA-1

Product images:

Surface staining of human peripheral blood cells with anti-human CD11a (MEM-25) PE.