

Product datasheet for **BM4034**

CD14 Mouse Monoclonal Antibody [Clone ID: X-8]

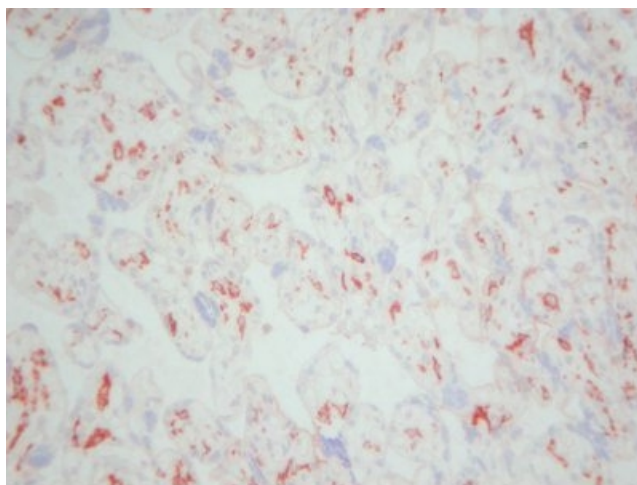
Product data:

Product Type:	Primary Antibodies
Clone Name:	X-8
Applications:	FC, IHC
Recommended Dilution:	Immunohistochemistry on Frozen Sections: 2-4 µg/ml (1/50-1/100). Does not react on routinely processed Paraffin Sections. Recommended Positive Control: Human placenta. Has been described to work in FACS (post fixation is recommended).
Reactivity:	Human
Host:	Mouse
Isotype:	IgG2b
Clonality:	Monoclonal
Immunogen:	Human Monocytes.
Specificity:	Monoclonal antibody X-8 prevents the Lipopolysaccharide Binding Protein (LBP) independent activation of cells via soluble CD14 by blocking the binding of CD14. BM4034 is specific for Human CD14 on monocytes, some populations of macrophages and granulocytes. The epitope has not been further characterized. Antigen Distribution Isolated Cells: Monocytes, granulocytes, myeloid leukaemia and myeloid cell lines. Tissue Sections: Positive on histiocytes, Langerhans cells, follicular dendritic cells and high endothelial venules.
Formulation:	PBS pH 7.2 containing 10 mg/ml BSA as stabilizer and 0.01% Thimerosal as preservative State: Purified State: Lyophilized purified IgG fraction
Reconstitution Method:	Restore by adding 0.5 ml distilled water (= Stock solution).
Concentration:	0.2 mg/ml (after reconstitution)
Purification:	Affinity Chromatography
Conjugation:	Unconjugated



[View online »](#)

Storage:	Store lyophilized at 2-8°C for 6 months or at -20°C long term. After reconstitution store the antibody undiluted at 2-8°C for one month or (in aliquots) at -20°C long term. Avoid repeated freezing and thawing.
Stability:	Shelf life: one year from despatch.
Gene Name:	CD14 molecule
Database Link:	Entrez Gene 929 Human P08571
Background:	CD14 is a 53'000 - 55'000 Mr glycoprotein strongly expressed on the surface of monocytes and weakly on the surface of granulocytes. It is anchored to the surface by linkage to glycosyl phosphatidylinositol (GPI). CD14 functions as a receptor for endotoxin and is the major receptor involved in the lethal response to both endotoxin and Gram-negative bacteria. In addition to membrane CD14, soluble forms of CD14 can be detected in serum and tissue culture supernatants of cells transfected with CD14.
Synonyms:	CD14

Product images:

CD14 antibody staining of Human Placenta Frozen Section.