

Product datasheet for **BM4031S**

CD18 (ITGB2) (activation epitope) Mouse Monoclonal Antibody [Clone ID: MEM-148]

Product data:

Product Type:	Primary Antibodies
Clone Name:	MEM-148
Applications:	FC, FN, IP, WB
Recommended Dilution:	Flow cytometry: Recommended dilution: 1-5 µg/ml. The antibody MEM-148 is an excellent marker of activated myeloid cells. Western blotting: Non-reducing conditions.
Reactivity:	Human
Host:	Mouse
Isotype:	IgG1
Clonality:	Monoclonal
Immunogen:	Peripheral blood mononuclear cells
Specificity:	The antibody recognizes the epitope exposed on free human CD18 chains unassociated with CD11 as well as on high-affinity state of LFA-1. CD18 (integrin b2 subunit; b2 integrin) is a 90-95 kDa type I transmembrane protein expressed on all leukocytes.
Formulation:	PBS, pH 7.4, with 15 mM Sodium Azide as preservative State: Purified State: Liquid purified Ig fraction (> 95% pure by PAGE)
Concentration:	lot specific
Purification:	Protein A Affinity Chromatography
Conjugation:	Unconjugated
Storage:	Store undiluted at 2-8°C. DO NOT FREEZE!
Stability:	Shelf life: one year from despatch.
Gene Name:	integrin subunit beta 2
Database Link:	Entrez Gene 3689 Human P05107



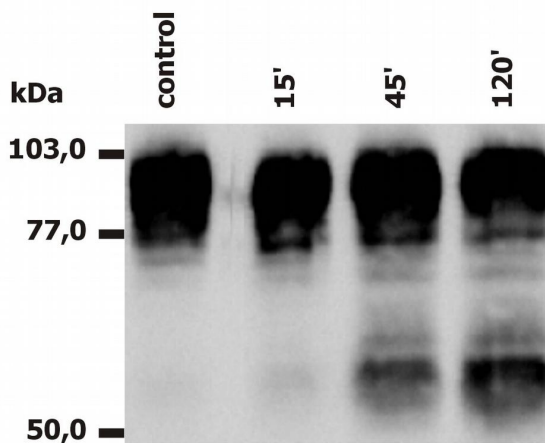
[View online »](#)

Background:

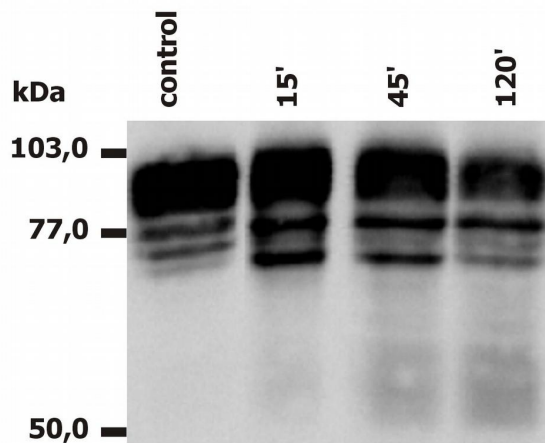
CD18, integrin b2 subunit, forms heterodimers with four types of CD11 molecule to constitute leukocyte (b2) integrins: aLb2 (CD11a/CD18, LFA-1), aMb2 (CD11b/CD18, Mac-1, CR3), aXb2 (CD11c/CD18) and aDb2 (CD11d/CD18). In most cases, the response mediated by the integrin is a composite of the functions of its individual subunits. These integrins are essential for proper leukocyte migration, mediating intercellular contacts. Absence of CD18 leads to leukocyte adhesion deficiency-1; severe reduction of CD18 expression leads to the development of a psoriasiform skin disease. CD18 is also a target of Mannheimia (Pasteurella) haemolytica leukotoxin and is sufficient to mediate leukotoxin-mediated cytolysis.

Synonyms:

Integrin beta-2, MFI7

Product images:


Western Blotting analysis of PMA-activated neutrophils (A) and monocytes (B), using anti-human CD18 (MEM-148). The antibody MEM-148 recognizes the lower 65 to 70 kDa zone (activation marker) as well as the upper 78 to 96 kDa zone (CD18).



Western Blotting analysis of PMA-activated neutrophils (A) and monocytes (B), using anti-human CD18 (MEM-148). The antibody MEM-148 recognizes the lower 65 to 70 kDa zone (activation marker) as well as the upper 78 to 96 kDa zone (CD18).