

Product datasheet for **BM4031R**

CD18 (ITGB2) (activation epitope) Mouse Monoclonal Antibody [Clone ID: MEM-148]

Product data:

Product Type:	Primary Antibodies
Clone Name:	MEM-148
Applications:	FC
Recommended Dilution:	Flow cytometry.
Reactivity:	Human
Host:	Mouse
Isotype:	IgG1
Clonality:	Monoclonal
Specificity:	This antibody recognises an epitope on the CD18 molecule that is hidden in the CD11/CD18 heterodimer on resting cells. Clone MEM-148 binds very weakly to resting peripheral blood leukocytes and strongly to all leukocytes upon cellular activation. The epitope recognised by MEM-148 is also exposed during dissociation of the CD11/CD18 by low pH.
Formulation:	Contains 0.09% Sodium Azide and 1% Bovine Serum Albumin Label: PE State: Lyophilized purified IgG Label: R. Phycoerythrin (RPE)
Reconstitution Method:	Restore with 1 ml distilled water
Purification:	Affinity chromatography on Protein G
Conjugation:	PE
Storage:	Prior to and following reconstitution store the antibody at 2-8°C. DO NOT FREEZE! This product is photosensitive and should be protected from light.
Stability:	Shelf life: one year from despatch.
Gene Name:	integrin subunit beta 2
Database Link:	Entrez Gene 3689 Human P05107



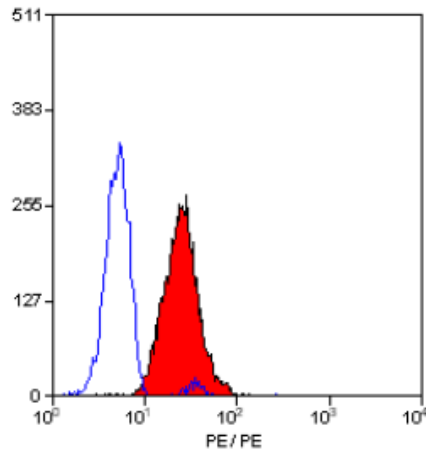
[View online »](#)

Background:

CD18 is an integrin. Integrins are integral cell surface proteins composed of an alpha chain and a beta chain. A given chain may combine with multiple partners resulting in different integrins. For example, beta 2 combines with the alpha L chain to form the integrin LFA1, and combines with the alpha M chain to form the integrin Mac1. Integrins are known to participate in cell adhesion as well as cell surface mediated signalling. CD18 is expressed by most leucocytes. Defects in the CD18 gene result in leukocyte adhesion deficiency.

Synonyms:

Integrin beta-2, MFI7

Product images:

Staining of human peripheral blood granulocytes with MOUSE ANTI HUMAN CD18 (ACT. EPITOPE):RPE