

Product datasheet for **BM4028B**

MRP8 (S100A8) Mouse Monoclonal Antibody [Clone ID: 8-5C2]

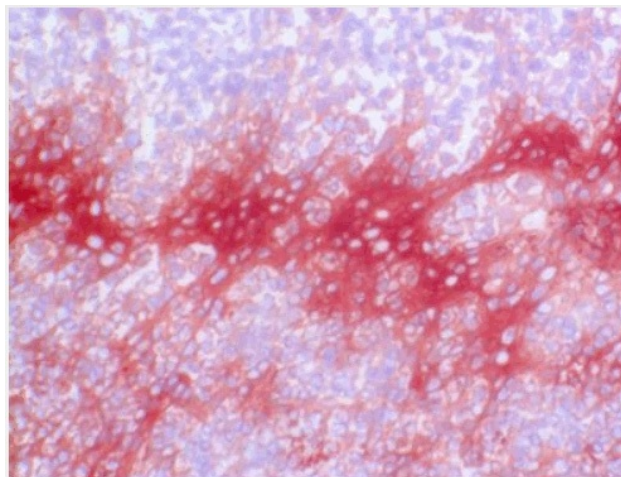
Product data:

Product Type:	Primary Antibodies
Clone Name:	8-5C2
Applications:	ELISA, IHC, WB
Recommended Dilution:	ELISA. Immunohistochemistry on Frozen Sections: 1 µg/ml (1/200). Immunohistochemistry on Paraffin Sections: 5 µg/ml (1/40). No pretreatment for antigen retrieval necessary. Microwave treatment in 0.01M Citrate pH 6.0 may enhance the reactivity. Suggested Positive Control: Human tonsil. Has been described to work in Dot blots .
Reactivity:	Human
Host:	Mouse
Isotype:	IgG1
Clonality:	Monoclonal
Immunogen:	Cultured Human monocytes.

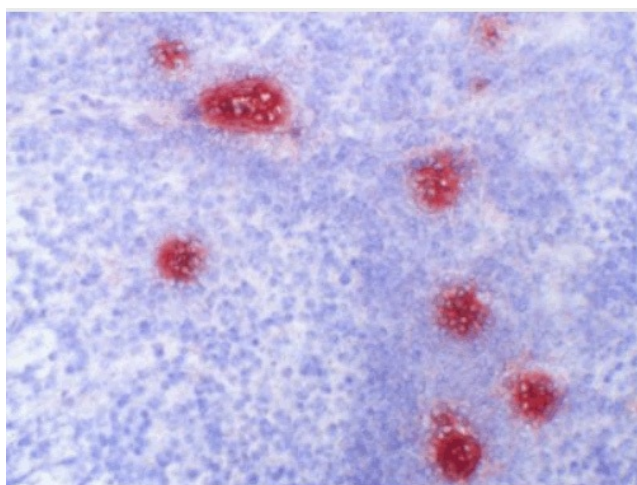


[View online »](#)

Specificity:	<p>This monoclonal antibody 8-5C2 detects a very distinct epitope in the central part of the molecule, in between the two Ca²⁺-binding domains (different from the S 13.67 epitope). This antibody identifies the Ca²⁺-binding light subunit of the inflammatory L-1 protein complex, also called S100A8 or Calgranulin A. It is useful for the identification of the 8kD subunit in various immunological techniques. Histological and serological data indicate that MRP8 is associated with chronic stages of inflammatory diseases.</p> <p>Antigen Distribution</p> <p>Isolated Cells: The antigen is found in granulocytes and monocytes but not in other blood cells. In cultured monocytes, maximum MRP8 is expressed after 3-4 days. Myeloid leukemia stain positive.</p> <p>Tissue Sections: In tissues MRP8 is found in a distinct subpopulation of inflammatory perivascular infiltrates of the myelo-monocytic lineage. Macrophages synthesise MRP8 increasingly during the late stages of inflammation. A low MRP8 (and high MRP-14) expression by macrophages was also reported in granulomatous diseases such as tuberculosis and sarcoidis. In non-granulomatous chronic inflammatory diseases such as chronic rheumatoid arthritis or chronic rejection after allograft transplantation, MRP8 and MRP14 positive cells consist of different subpopulations.</p> <p>The antibody reacts with Bovine spleen but does not react with Rat tissues. It shows a diffuse reaction with Swine spleen.</p>
Formulation:	<p>PBS, pH 7.2 Label: Biotin State: Lyophilized purified Ig fraction from Cell Culture Supernatant Stabilizer: 5 mg/ml BSA Preservative: 0.05% (v/v) Kathon</p>
Reconstitution Method:	Restore with 0.5 ml distilled water (This stock solution contains 0.2 mg/ml IgG).
Concentration:	0.2 mg/ml (after reconstitution)
Purification:	Protein A Chromatography
Conjugation:	Biotin
Storage:	<p>Store lyophilized at 2-8°C for 6 months or at -20°C long term. After reconstitution store the antibody undiluted at 2-8°C for one month or (in aliquots) at -20°C long term. Avoid repeated freezing and thawing.</p>
Stability:	Shelf life: one year from despatch.
Gene Name:	S100 calcium binding protein A8
Database Link:	Entrez Gene 6279 Human P05109
Synonyms:	S100-A8, CAGA, MRP-8, CFAG

Product images:

Calgranulin-A / MRP8 antibody staining of Human Tonsil Frozen Section.



Calgranulin-A / MRP8 antibody staining of Human Tonsil Frozen Section.