

Product datasheet for **BM4025B**

MRP8/14 (S100A8/A9) Mouse Monoclonal Antibody [Clone ID: 27E10]

Product data:

Product Type:	Primary Antibodies
Clone Name:	27E10
Applications:	ELISA, IHC
Recommended Dilution:	ELISA. Immunohistochemistry on Frozen Sections: 0.5 µg/ml (1/400) Immunohistochemistry on Paraffin Sections: 2 µg/ml (1/100), Proteinase K pre-treatment for antigen retrieval is recommended. Recommended Positive Control: Human tonsil. Has been described to work in FACS and Dot blots .
Reactivity:	Human
Host:	Mouse
Isotype:	IgG1
Clonality:	Monoclonal
Immunogen:	Cultured Human monocytes.



[View online »](#)

Specificity:	<p>This antibody is ideally suited for the detection of early inflammatory macrophages and thus for the classification of acute stage inflammation in tissue sections and in smears, the characterization of tumorous tissues and the in vitro monitoring of peripheral blood cell cultures.</p> <p>Clone 27E10 is unique in that it recognizes an epitope on the MRP8/14 heterocomplex that is not exposed on the individual subunits MRP8 or MRP14.</p> <p>The antibody reacts with Human subpopulations of macrophages, monocytes and granulocytes; peripheral blood monocytes carry the antigen extra- and intracellularly, neutrophils only intracellularly.</p> <p>Antigen Distribution</p> <p>Isolated Cells: Monocytes carry the antigen both on the surface and intracellularly, granulocytes exhibit it only intracellularly. Up to 80% of monocytes in early cultures (24-48h) are positive. No reaction has been seen with lymphocytes or platelets.</p> <p>Tissue Sections: The antigen is found in macrophages in the red pulp of the spleen and liver. It is strongly expressed in macrophages from acute inflamed tissues (peridontitis, contact eczema, urticaria, erythrodermia) where some endothelial and epidermal cells may also express this antigen. It is normally absent on resident mononuclear phagocytes in healthy tissues (skin, gut, thymus).</p>
Formulation:	<p>PBS, pH 7.2</p> <p>Label: Biotin</p> <p>State: Lyophilized purified IgG fraction</p> <p>Stabilizer: 5 mg/ml BSA</p> <p>Preservative: 0.05% (v/v) Kathon CG</p>
Reconstitution Method:	Restore with 0.5 ml distilled water.
Concentration:	0.2 mg/ml (after reconstitution)
Purification:	Affinity Chromatography
Conjugation:	Biotin
Storage:	<p>Store lyophilized at 2-8°C for 6 months or at -20°C long term.</p> <p>After reconstitution store the antibody undiluted at 2-8°C for one month or (in aliquots) at -20°C long term.</p> <p>Do not freeze working dilutions</p> <p>Avoid repeated freezing and thawing.</p>
Stability:	Shelf life: one year from despatch.

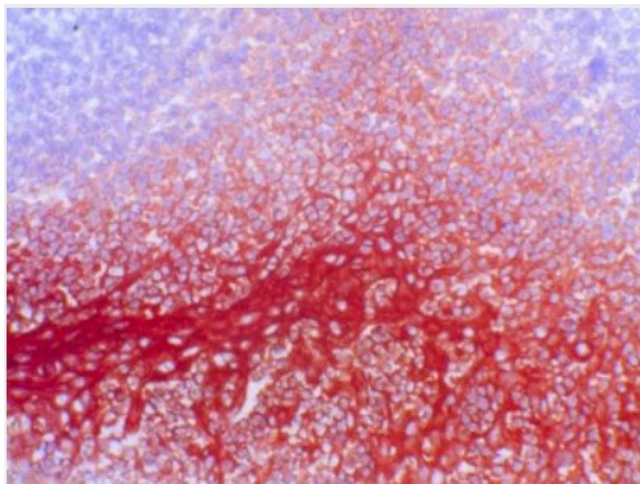
Background:

MRP8 and MRP14 are members of the S100 family of proteins containing 2 EF hand calcium binding motifs. S100 proteins are localized in the cytoplasm and/or nucleus of a wide range of cells, and involved in the regulation of a number of cellular processes such as cell cycle progression and differentiation. S100 genes include at least 13 members which are located as a cluster on chromosome 1q21.

The antigen is produced by the heterocomplex formation of MRP8 (S100A8 or Calgranulin A) and MRP14 (S100A9 or Calgranulin B), two calcium binding proteins of the S 100 protein family.

Synonyms:

Calgranulin A/B, Calprotectin, L1 Protein, CFAG, P8, P14, CAGA, CAGB, CFAG, MRP-8, MRP-14

Product images:


Human Tonsil Frozen Section stained with Biotin conjugated S100A8/9 Antibody Cat.-No BM4025B (Clone 27E10).