

Product datasheet for **BM4011**

Cd209b Rat Monoclonal Antibody [Clone ID: ER-TR9]

Product data:

Product Type:	Primary Antibodies
Clone Name:	ER-TR9
Applications:	FC, IHC
Recommended Dilution:	Immunohistochemistry on Frozen Sections: 0.5 µg/ml (1/600). Does not react on routinely processed Paraffin sections. <i>Recommended Positive Control:</i> Mouse spleen. Has been described to work in FACS .
Reactivity:	Mouse
Host:	Rat
Isotype:	IgM
Clonality:	Monoclonal
Immunogen:	Thymus cells.



[View online »](#)

Specificity:	<p>ER-TR9 antibody is a very useful marker for the identification of macrophage subpopulations present in the splenic marginal zone, lymph node medulla and other organs. In combination with MOMA-1 (Cat-Nr SM066P), the murine metallophilic macrophage marker, a detailed characterization of murine splenic marginal zone macrophages is obtained. ER-TR9 is also useful when studying phagocytosis of neutral polysaccharides since the antibody selectively inhibits uptake of these glycans by macrophages.</p> <p>The antigen recognized by ER-TR9 has recently been shown to be the Murine analogue of the Human DC-SIGN (Dendritic Cell - Specific ICAM-3 Grabbing Non Integrin), named SIGN-R1.</p> <p>Antigen Distribution</p> <p>Antigen Distribution on Isolated cells: The antigen is found on a subpopulation of phagocytic macrophages isolated from the spleen and showing acid phosphatase and moderate non-specific esterase activity. These phagocytes selectively ingest neutral polysaccharides such as Ficoll.</p> <p>Antigen Distribution on Tissue Sections: Subpopulation of resident macrophages in the splenic marginal zone which are in the proximity of a certain B cell subpopulation ($\mu+$, d-). It is also found on a subpopulation of macrophages localized in the medullary sinuses and trabecular sinuses of lymph nodes. Furthermore, macrophage subpopulations in other organs, such as some connective tissue macrophages in the dermis, may also show ER-TR9 antigen expression.</p> <p>This antibody is specific for a Mouse subpopulation of mature tissue macrophages present in the splenic marginal zone, lymph node medullary and trabecular sinuses.</p>
Formulation:	<p>PBS, pH 7.2 with 0.1% Kathon as a preservative</p> <p>State: Purified</p> <p>State: Lyophilized purified IgM fraction</p>
Reconstitution Method:	Restore with 0.5 ml distilled water.
Concentration:	0.3 mg/ml
Purification:	Affinity Chromatography
Conjugation:	Unconjugated
Storage:	<p>Store lyophilized at 2-8°C for 6 months or at -20°C long term.</p> <p>After reconstitution store the antibody undiluted at 2-8°C for one month or (in aliquots) at -20°C long term.</p> <p>Avoid repeated freezing and thawing.</p>
Stability:	Shelf life: one year from despatch.
Gene Name:	CD209b antigen
Database Link:	<p>Entrez Gene 69165 Mouse</p> <p>Q8CJ91</p>
Synonyms:	DC-SIGN-related protein 1, OtB7

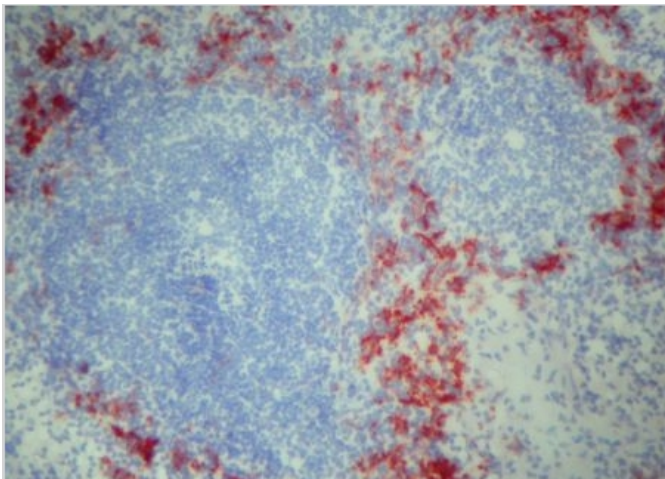
Product images:

Figure 1. CD209b/SIGN-R1 antibody staining of Mouse Spleen Frozen Section.