

## Product datasheet for **BM4008FS**

### Adgre1 Rat Monoclonal Antibody [Clone ID: Cl:A3-1]

#### Product data:

Product Type:	Primary Antibodies
Clone Name:	Cl:A3-1
Applications:	FC, IF
Recommended Dilution:	<b>Flow Cytometry.</b> <b>Immunofluorescence.</b>
Reactivity:	Mouse
Host:	Rat
Isotype:	IgG2b
Clonality:	Monoclonal
Immunogen:	Thioglycollate stimulated peritoneal macrophages from C57/BL mice. Spleen cells from immunised HOB2 rats were fused with cells of the mouse NS-1 myeloma cell line.
Specificity:	This antibody recognises the Murine F4/80 antigen. Clone Cl:A3-1 has been reported to modulate cytokine levels released in response to <i>Listeria monocytogenes</i> . We recommend the use of antibody BM4008A for this purpose
Formulation:	PBS Label: FITC State: Liquid purified IgG fraction Stabilizer: 1% BSA Preservative: 0.09% Sodium Azide Label: Fluorescein Isothiocyanate Isomer 1
Concentration:	lot specific
Purification:	Affinity Chromatography on Protein G
Conjugation:	FITC
Storage:	Store undiluted at 2-8°C for one month or (in aliquots) at -20°C for longer. This product is photosensitive and should be protected from light. Avoid repeated freezing and thawing.
Stability:	Shelf life: one year from despatch.
Gene Name:	adhesion G protein-coupled receptor E1



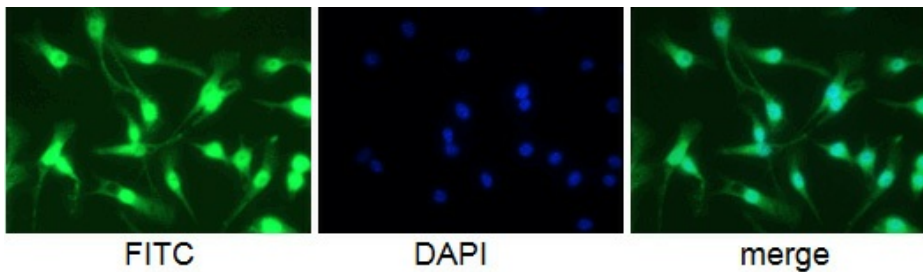
[View online »](#)

Database Link: [Entrez Gene 13733 Mouse Q61549](#)

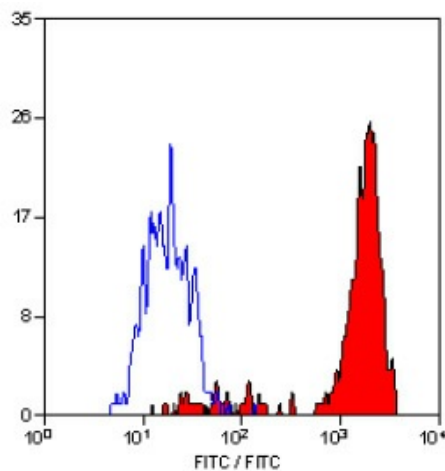
**Background:** F4/80 antigen is a 160 kDa cell surface glycoprotein that is a member of the EGF TM7 family of proteins which shares 68% overall amino acid identity with human EGF module containing mucin like hormone receptor 1 (EMR1). Expression of F4/80 is heterogeneous and is reported to vary during macrophage maturation and activation. The F4/80 antigen is expressed on a wide range of mature tissue macrophages including Kupffer cells, Langerhans, microglia, macrophages located in the gut lamina propria, peritoneal cavity, lung, thymus, bone marrow stroma and macrophages in the red pulp of the spleen. F4/80 expression has also been reported on a subpopulation of dendritic cells but is absent from macrophages located in T cell areas of the spleen and lymph node. The ligands and biological functions of the F4/80 antigen have not yet been determined but recent studies suggest a role for F4/80 in the generation of efferent CD8+ve regulatory T cells.

**Synonyms:** Emr1, Gpf480

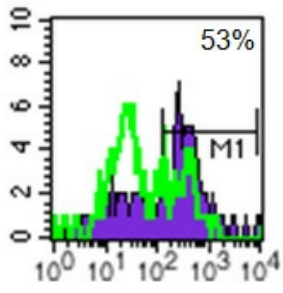
### Product images:



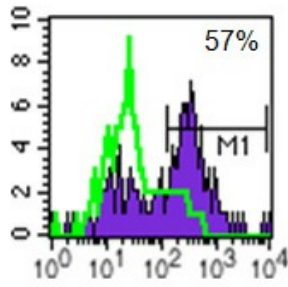
Mouse anti-Macrophage F4/80 antigen antibody (5 ug/ml) on Raw 204.4 cells. Cells were fixed in 1% PFA, permeabilized in 0.25% Triton X 100 in PBS, blocked in 1% BSA in PBS.



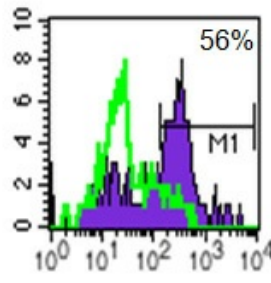
Staining of mouse peritoneal macrophages with RAT ANTI MOUSE F4/80 ANTIGEN antibody -FITC



2.5ug/ml  
(0.25ug/10<sup>6</sup> cells)



1.25ug/ml  
(0.125ug/10<sup>6</sup> cells)



0.625ug/ml  
(0.0625ug/10<sup>6</sup> cells)

Mouse anti-Macrophage F4/80 antigen antibody on thioglycollate elicited mouse peritoneal macrophages. Purple: ; Green: Isotype control SM19FS; Percentages reflect % positive after subtraction of negative control, using M1 marker.