

Product datasheet for **BM4007S**

Adgre1 Rat Monoclonal Antibody [Clone ID: BM8]

Product data:

Product Type:	Primary Antibodies
Clone Name:	BM8
Applications:	FC, IF, IHC
Recommended Dilution:	Immunohistochemistry on Frozen Sections: 0.4 µg/ml (1/500). Immunohistochemistry on Paraffin Sections: 4 µg/ml (1/50). <i>Proteinase K pretreatment</i> for antigen retrieval is recommended. Recommended Positive Control: Mouse spleen. Has been described to work in FACS .
Reactivity:	Mouse
Host:	Rat
Isotype:	IgG2a
Clonality:	Monoclonal
Immunogen:	Cultured Macrophages. The antigen/epitope is a 125 kDa extracellular membrane protein sensitive to 2-Mercaptoetanol.
Specificity:	This antibody is useful for the detection of the F4/80 antigen on major subpopulations of resident tissue macrophages. The antigen expression increases upon maturation of macrophage precursors in bone marrow and blood as well as in ontogeny. This clone is the only Macrophage marker that is able to distinguish non-destructive from destructive inflammation processes in the pancreas and has been shown to be a unique histological marker of the progression from peri-insulinitis to beta-cell destruction and diabetes in a mouse diabetes model. Antigen Distribution Tissue Sections: The antigen is detected on tissue fixed macrophages in all organs tested so far (spleen, lymph nodes, thymus, liver, skin). It is also present on Langerhans cells in the skin and Kupffer cells in the liver. In complete Freund's adjuvant induced granulomas the antigen is expressed by inflammatory macrophages, but is absent from epitheloid cells. Isolated Cells: expressed in vitro on over 80% of M-CSF stimulated bone marrow derived macrophages, after a few days of culture. It is absent from granulocytes, lymphocytes and thrombocytes.



[View online »](#)

Formulation:	Stock Solution contains PBS, pH 7.2 with 5 mg/ml BSA as a stabilizer and 0.01% Kathon as a preservative State: Aff - Purified State: Lyophilized purified IgG fraction
Reconstitution Method:	Restore by adding 0.5 ml distilled water.
Concentration:	0.2 mg/ml (after reconstitution)
Purification:	Affinity Chromatography
Conjugation:	Unconjugated
Storage:	Store lyophilized at 2-8°C for 6 months or at -20°C long term. After reconstitution store the antibody undiluted at 2-8°C for one month or (in aliquots) at -20°C long term. Avoid repeated freezing and thawing.
Stability:	Shelf life: one year from despatch.
Gene Name:	adhesion G protein-coupled receptor E1
Database Link:	Entrez Gene 13733 Mouse Q61549
Background:	F4/80 protein binds to Macrophages from different sites including the peritoneal cavity, lung, spleen and thymus, to blood monocytes and to macrophages derived from bone marrow precursors in culture. F4/80 is not expressed by lymphocytes or polymorphonuclear cells.
Synonyms:	Emr1, Gpf480

Note:**Protocol: Protocol with Frozen, ice-cold Acetone-Fixed Sections:**

(The whole procedure is performed at room temperature)

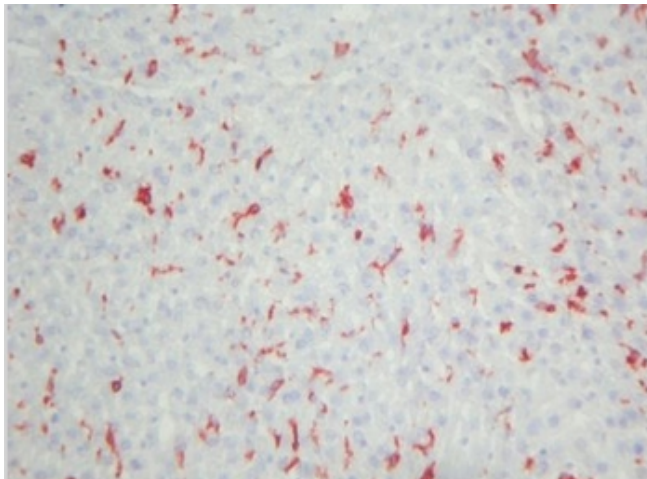
1. Wash in PBS.
2. Block endogenous peroxidase.
3. Wash in PBS.
4. Block with 10% normal goat serum in PBS for 30min. in a humid chamber.
5. Incubate with primary antibody (dilution see datasheet) for 1h in a humid chamber.
6. Wash in PBS.
7. Incubate with secondary antibody (peroxidase-conjugated goat anti rat IgG (H+L) minimal-cross reaction to mouse) for 1h in a humid chamber.
8. Wash in PBS.
9. Incubate with AEC substrate (3-amino-9-ethylcarbazol) for 12min.
10. Wash in PBS.
11. Counterstain with Mayer's hemalum.

Protocol with Formalin-Fixed, Paraffin-Embedded Sections:

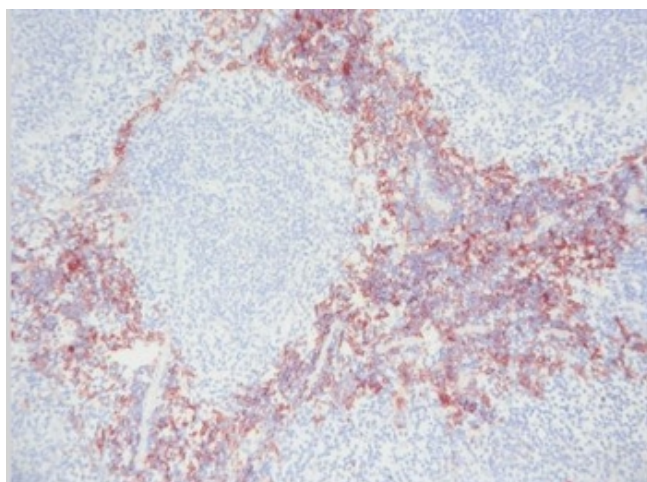
(The whole procedure is performed at room temperature)

1. Deparaffinize and rehydrate tissue section.
2. Incubate the tissue section with proteinase K for 7min.
3. Wash in distilled water.
4. Block endogenous peroxidase.
5. Wash in PBS.
6. Block with 10% normal goat serum in PBS for 30min. in a humid chamber.
7. Incubate with primary antibody (dilution see datasheet) for 1h in a humid chamber.
8. Wash in PBS.
9. Incubate with secondary antibody (peroxidase-conjugated goat anti rat IgG (H+L) minimal-cross reaction to mouse) for 1h in a humid chamber.
10. Wash in PBS.
11. Incubate with AEC substrate (3-amino-9-ethylcarbazol) for 12min.
12. Wash in PBS.
13. Counterstain with Mayer's hemalum.

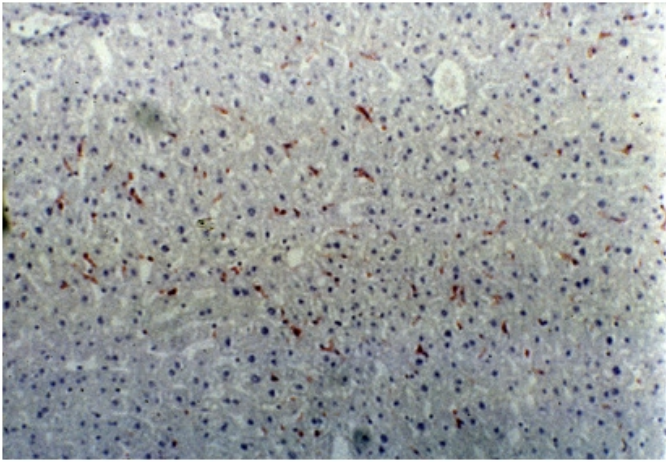
Product images:



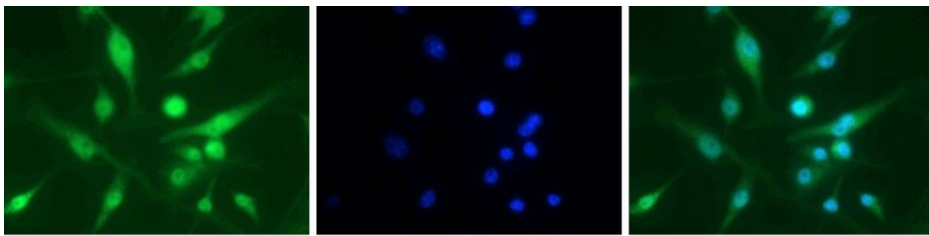
F4/80 Antigen antibody staining of Mouse Liver Frozen Section.



F4/80 antibody staining of Mouse Spleen Frozen Section.



F4/80 antibody staining of Mouse Liver Section.

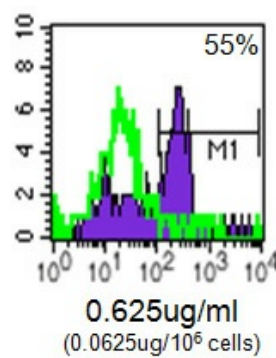
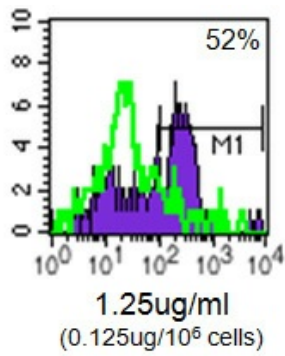
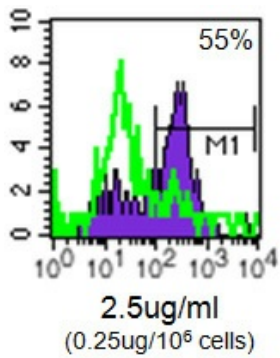


FITC

DAPI

merge

Mouse anti-Macrophage F4/80 antigen antibody. (5 ug/ml) on Raw 204.4 cells. Cells were fixed in 1% PFA, permeabilized in 0.25% Triton X 100 in PBS, blocked in 1% BSA in PBS.



Mouse anti-Macrophage F4/80 antigen antibody. on thioglycollate elicited mouse peritoneal macrophages. Purple: antibody; Green: Isotype control SM15F; Percentages reflect % positive after subtraction of negative control, using M1 marker.