

Product datasheet for **BM4007B**

Adgre1 Rat Monoclonal Antibody [Clone ID: BM8]

Product data:

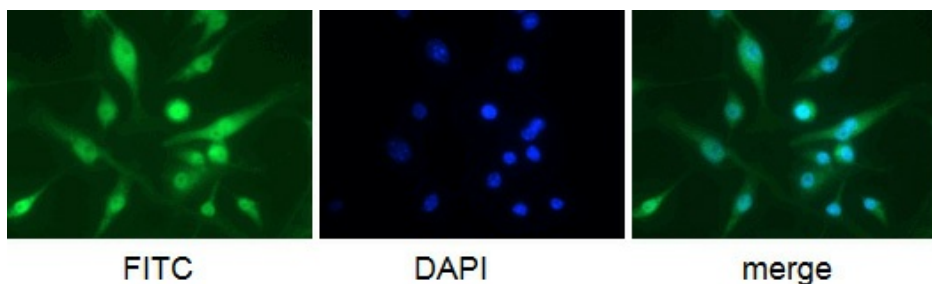
Product Type:	Primary Antibodies
Clone Name:	BM8
Applications:	FC, IF, IHC
Recommended Dilution:	Immunohistochemistry on Frozen Sections: 1.0 µg/ml (1/200). Immunohistochemistry on Paraffin Sections: not tested, but work well with the purified antibody using Proteinase K pretreatment. Recommended Positive Control: Mouse spleen. Has been described to work in FACS .
Reactivity:	Mouse
Host:	Rat
Isotype:	IgG2a
Clonality:	Monoclonal
Immunogen:	Cultured Macrophages.
Specificity:	<p>This antibody is useful for the detection of major subpopulations of resident tissue macrophages. It is also suitable for the detection of blood monocytes and other monocytic cells isolated from different sources by FACS.</p> <p>This clone is the only macrophage marker that is able to distinguish non-destructive from destructive inflammation processes in the pancreas and has been shown to be a unique histological marker of the progression from peri-insulitis to b-cell destruction and diabetes in a mouse diabetes model.</p> <p>Antigen Distribution:</p> <p>Isolated Cells: expressed in vitro on over 80% of M-CSF stimulated bone marrow derived macrophages, after a few days of culture. It is absent from granulocytes, lymphocytes and thrombocytes.</p> <p>Tissue Sections: The antigen is detected on tissue fixed macrophages in all organs tested so far (spleen, lymph nodes, thymus, liver, skin). It is also present on Langerhans cells in the skin and Kupffer cells in the liver. In complete Freund's adjuvant induced granulomas the antigen is expressed by inflammatory macrophages, but is absent from epitheloid cells.</p>



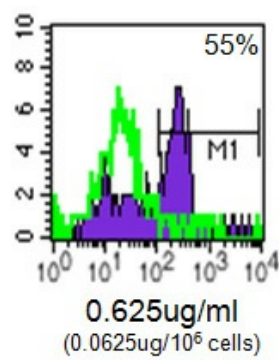
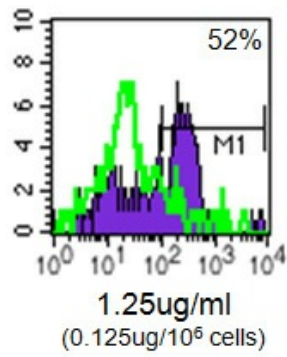
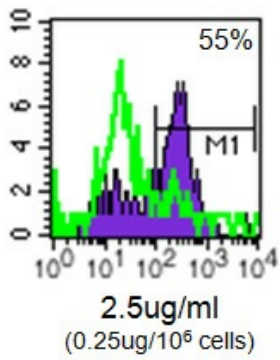
[View online »](#)

Formulation:	PBS, pH 7.2 Label: Biotin State: Lyophilized purified IgG fraction Stabilizer: 5 mg/ml BSA Preservative: None
Reconstitution Method:	Restore with 0.5 ml distilled water
Concentration:	0.2 mg/ml (after reconstitution)
Purification:	Affinity Chromatography
Conjugation:	Biotin
Storage:	Store lyophilized at 2-8°C for 6 months or at -20°C long term. After reconstitution store the antibody undiluted at 2-8°C for one month or (in aliquots) at -20°C long term. Avoid repeated freezing and thawing.
Stability:	Shelf life: one year from despatch.
Gene Name:	adhesion G protein-coupled receptor E1
Database Link:	Entrez Gene 13733 Mouse Q61549
Background:	F4/80 protein binds to Macrophages from different sites including the peritoneal cavity, lung, spleen and thymus, to blood monocytes and to macrophages derived from bone marrow precursors in culture. F4/80 is not expressed by lymphocytes or polymorphonuclear cells.
Synonyms:	Emr1, Gpf480

Product images:



Mouse anti-Macrophage F4/80 antigen antibody (5 ug/ml) on Raw 204.4 cells. Cells were fixed in 1% PFA, permeabilized in 0.25% Triton X 100 in PBS, blocked in 1% BSA in PBS.



Mouse anti-Macrophage F4/80 antigen antibody on thioglycollate elicited mouse peritoneal macrophages. Purple: antibody; Green: Isotype control SM15F; Percentages reflect % positive after subtraction of negative control, using M1 marker.