

## Product datasheet for **BM4005B**

### Sftpd (Lectin Domain) Mouse Monoclonal Antibody [Clone ID: VIF11]

#### Product data:

Product Type:	Primary Antibodies
Clone Name:	VIF11
Applications:	ELISA, IHC, WB
Recommended Dilution:	<b>Immunohistochemistry on Frozen Sections:</b> 1 µg/ml (1/400) for rat cryosections. <b>Immunohistochemistry on Paraffin Sections:</b> Not tested. <b>ELISA.</b> <b>Western Blots.</b> <i>Suggested Positive Control:</i> Rat lung.
Reactivity:	Human, Rat
Host:	Mouse
Isotype:	IgG1
Clonality:	Monoclonal
Immunogen:	Purified rat surfactant protein D from bronchoalveolar lavage.
Specificity:	<b>Antigen Distribution on Tissue Sections:</b> alveolar type II cells, alveolar macrophages, two types of Clara cells SP-A+ and SP-A-, and extracellular deposits. Alveolar type III cells stain negative. No reaction on Rat skin, colon, kidney and liver.
Formulation:	PBS, pH 7.2, 10 mg/ml BSA as a stabilizer and 0.01% Thimerosal as a preservative Label: Biotin State: Lyophilized purified Ig fraction
Reconstitution Method:	Restore with 0.5 ml distilled water.
Concentration:	0.4 mg/ml (after reconstitution)
Purification:	Affinity Chromatography
Conjugation:	Biotin
Storage:	Prior to reconstitution store at 2-8°C. Following reconstitution store undiluted at 2-8°C for one month or (in aliquots) at -20°C for longer. Avoid repeated freezing and thawing.
Stability:	Shelf life: one year from despatch.



[View online »](#)

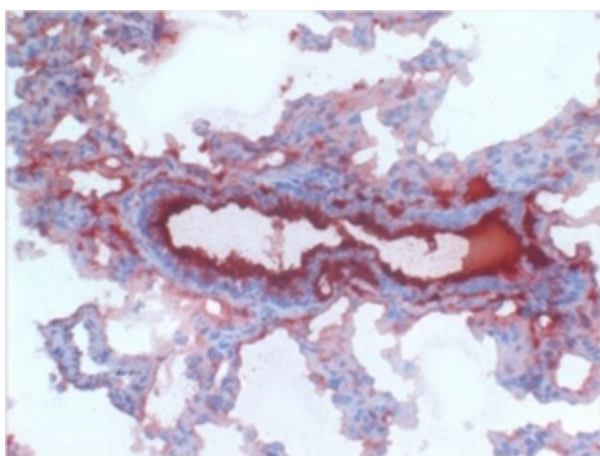
Gene Name: surfactant protein D

Database Link: [Entrez Gene 6441 Human](#)[Entrez Gene 25350 Rat P35248](#)

Background: Surfactant protein D (SP-D) is a  $\text{Ca}^{2+}$ -dependent carbohydrate-binding protein and is structurally similar to other C-type mammalian lectins, such as conglutinin and SP-A. It has a molecular size of approximately 43kDa in its reduced state, 620kDa in non-dissociating conditions. SP-D enhances the production of oxygen radicals by rat alveolar macrophages and regulates some actions of SP-A, which is the most abundant surfactant protein. SP-D is synthesized and secreted by alveolar epithelial type II cells.

Synonyms: Lung surfactant protein D, SP-D, PSP-D, PSPD, SFTP4, Collectin-7, COLEC7

### Product images:



SFTPD antibody staining of Frozen Rat Lung Section (Clone VIF11, Biotin Conjugated)