

Product datasheet for **BM4004**

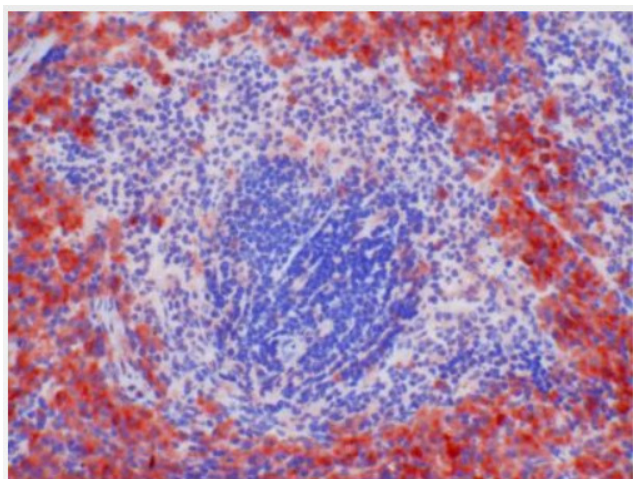
Macrophages (pan) Mouse Monoclonal Antibody [Clone ID: RM1]

Product data:

Product Type:	Primary Antibodies
Clone Name:	RM1
Applications:	FC, IHC
Recommended Dilution:	<p>Immunohistochemistry on Frozen Sections: 2 µg/ml (1/100).</p> <p>Immunohistochemistry on Paraffin Sections: 20 µg/ml (1/10). Microwave pretreatment for antigen retrieval is recommended.</p> <p>Has been described to work in FACS.</p> <p><i>Suggested Positive Control:</i> Rat spleen.</p>
Reactivity:	Rat
Host:	Mouse
Isotype:	IgG1
Clonality:	Monoclonal
Immunogen:	Rat Peritoneal Macrophages.
Specificity:	<p>This antibody detects monocytes, subpopulation of macrophages, interdigitating cells. The antigen is localized on the surface of cells. It is stable to 2% periodate-lysine-paraformaldehyde fixation. The epitope has not been further characterized.</p> <p>Antigen Distribution:</p> <p><u>Isolated cells:</u> Positive on monocytes in peripheral blood. Positive on 20–30 % of peritoneal cells, increasing to 30–40 % after thioglycolate stimulation.</p> <p><u>Tissue sections:</u> The antigen is found on a subpopulation of most tissue fixed macrophages. It is quite predominant on red pulp macrophages and interdigitating cells in the outer periarteriolar lymphatic sheath of the spleen, the inner border of marginal sinus of lymph nodes, and alveolar macrophages.</p> <p>Langerhans cells of the skin and twisted spindle-shaped cells of the omentum are detected by the antibody. It is absent from sinusoidal endothelial cells and parenchymal cells.</p>



Formulation:	PBS pH 7.2 with 10 mg/ml BSA as a stabilizer and 0.01% Thimerosal as a preservative. State: Purified State: Lyophilized purified Ig fraction.
Reconstitution Method:	Restore with 0.5 ml distilled water.
Concentration:	0.2 mg/ml
Purification:	Affinity Chromatography.
Conjugation:	Unconjugated
Storage:	Store lyophilized at 2-8°C for 6 months or at -20°C long term. After reconstitution store the antibody undiluted at 2-8°C for one month or (in aliquots) at -20°C long term. Avoid repeated freezing and thawing.
Stability:	Shelf life: one year from despatch.
Background:	The antigen is found on a subpopulation of most tissue fixed macrophages. It is quite predominant on red pulp macrophages and interdigitating cells in the outer periarteriolar lymphatic sheath of the spleen, the inner border of marginal sinus of lymph nodes, and alveolar macrophages. Langerhans cells of the skin and twisted spindle-shaped cells of the omentum are detected by the antibody. It is absent from sinusoidal endothelial cells and parenchymal cells.
Synonyms:	Macrophage marker

Product images:


Staining of RM1 antibody on rat spleen (frozen section) Cat.-No BM4004