

Product datasheet for **BM4000R**

Cd68 Mouse Monoclonal Antibody [Clone ID: ED1]

Product data:

Product Type:	Primary Antibodies
Clone Name:	ED1
Applications:	FC
Recommended Dilution:	Flow Cytometry: Use 10 µl of Neat-1/10 diluted antibody to label 10 ⁶ cells in 100 µl. Results maybe enhanced using membrane permeabilisation.
Reactivity:	Bovine, Rat
Host:	Mouse
Isotype:	IgG1
Clonality:	Monoclonal
Immunogen:	Rat spleen cells. Spleen cells from immunised BALB/c mice were fused with cells of the SP2/0-Ag14 mouse myeloma cell line.
Specificity:	This antibody recognises CD68.
Formulation:	PBS Label: PE State: Lyophilized purified IgG fraction. Stabilizer: 1% BSA Preservative: 0.09% Sodium Azide Label: R. Phycoerythrin (RPE)
Reconstitution Method:	Restore with 1 ml distilled water
Purification:	Affinity Chromatography on Protein A
Conjugation:	PE
Storage:	Prior to and following reconstitution store the antibody at 2-8°C. DO NOT FREEZE! This product is photosensitive and should be protected from light.
Stability:	Shelf life: one year from despatch.
Gene Name:	Cd68 molecule



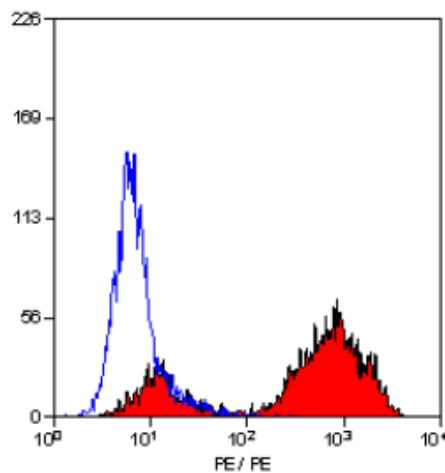
[View online »](#)

Database Link: [Entrez Gene 287435 Rat Q4FZY1](#)

Background: The CD68 antigen is a 37kD transmembrane protein that is post-translationally glycosylated to give a protein of 87-115kD. CD68 is specifically expressed by tissue macrophages, Langerhans cells and at low levels by dendritic cells. It could play a role in phagocytic activities of tissue macrophages, both in intracellular lysosomal metabolism and extracellular cell-cell and cell-pathogen interactions. It binds to tissue- and organ-specific lectins or selectins, allowing homing of macrophage subsets to particular sites. Rapid recirculation of CD68 from endosomes and lysosomes to the plasma membrane may allow macrophages to crawl over selectin bearing substrates or other cells.

Synonyms: Gp110, Macrosialin, Macrophage marker

Product images:



Staining of rat peritoneal macrophages cells with Mouse Anti RAT CD68 antibody RPE conjugated (BM4000R).