

Product datasheet for **BM4000F**

Cd68 Mouse Monoclonal Antibody [Clone ID: ED1]

Product data:

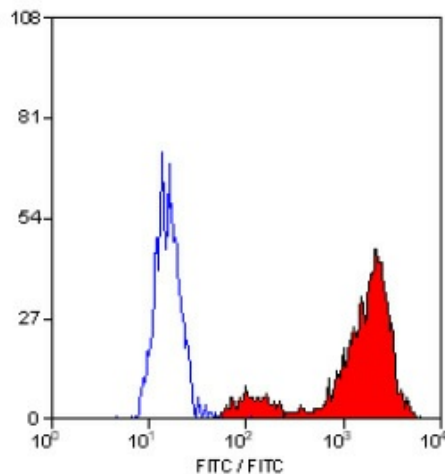
Product Type:	Primary Antibodies
Clone Name:	ED1
Applications:	FC
Recommended Dilution:	Flow Cytometry: Use 10 µl of neat antibody to label 10 ⁶ cells in 100 µl. Results may be enhanced using membrane permeabilisation . The expression of ED1 antigen being predominantly cytoplasmic (Dijkstra et al. 1985), flow cytometry results are improved by the use of a membrane permeabilization procedure, such as Leucoperm, prior to staining.
Reactivity:	Bovine, Rat
Host:	Mouse
Isotype:	IgG1
Clonality:	Monoclonal
Immunogen:	Rat Spleen cells. Spleen cells from immunised BALB/c mice were fused with cells of the SP2/0-Ag 14 mouse myeloma cell line.
Specificity:	This antibody clone ED1 recognizes the rat ED1 antigen, a heavily glycosylated protein of 90-110 KDa, also known as rat CD68 (Dijkstra et al. 1985). The ED1 antigen is expressed on most macrophages populations, as well as on monocytes and is considered as a pan-macrophage marker in the rat (Damoiseaux et al. 1994). ED1 is expressed predominantly on the lysosomal membrane and lightly on the cell surface (Dijkstra et al. 1985).
Formulation:	PBS Label: FITC State: Liquid purified IgG fraction Stabilizer: 1% BSA Preservative: 0.09% Sodium Azide Label: Fluorescein Isothiocyanate Isomer 1
Concentration:	lot specific
Purification:	Affinity Chromatography on Protein A
Conjugation:	FITC



[View online »](#)

Storage:	Store undiluted at 2-8°C for one month or (in aliquots) at -20°C for longer. Avoid repeated freezing and thawing. This product is photosensitive and should be protected from light.
Stability:	Shelf life: one year from despatch.
Gene Name:	Cd68 molecule
Database Link:	Entrez Gene 287435 Rat Q4FZY1
Background:	The CD68 antigen is a 37kD transmembrane protein that is post-translationally glycosylated to give a protein of 87-115kD. CD68 is specifically expressed by tissue macrophages, Langerhans cells and at low levels by dendritic cells. It could play a role in phagocytic activities of tissue macrophages, both in intracellular lysosomal metabolism and extracellular cell-cell and cell-pathogen interactions. It binds to tissue- and organ-specific lectins or selectins, allowing homing of macrophage subsets to particular sites. Rapid recirculation of CD68 from endosomes and lysosomes to the plasma membrane may allow macrophages to crawl over selectin bearing substrates or other cells.
Synonyms:	Gp110, Macrosialin, Macrophage marker

Product images:



Staining of rat peritoneal macrophages cells with Mouse Permeabilised Anti Rat CD68 antibody FITC conjugated.