

## Product datasheet for **BM4000**

### Cd68 Mouse Monoclonal Antibody [Clone ID: ED1]

#### Product data:

Product Type:	Primary Antibodies
Clone Name:	ED1
Applications:	FC, IF, IHC, IP, R, WB
Recommended Dilution:	<b>RIA.</b> <b>Western blotting.</b> <b>Immunoprecipitation.</b> <b>Immunofluorescence.</b> <b>Flow Cytometry:</b> Use 10 µl of 1/25-1/100 diluted CD68 antibody to label 10 <sup>6</sup> cells in 100 µl (Membrane permeabilisation is required for best results). <b>Immunohistology on Frozen Sections.</b> <b>Immunohistology on Paraffin Sections:</b> 1/50-1/100. Requires protein digestion pretreatment of Paraffin sections with Pronase or Trypsin.
Reactivity:	Bovine, Rat
Host:	Mouse
Isotype:	IgG1
Clonality:	Monoclonal
Immunogen:	Rat spleen cells. Spleen cells from immunised BALB/c mice were fused with cells of the SP2/0-Ag14 mouse myeloma cell line.
Specificity:	CD68 Antibody (Cat#BM4000) recognises a single chain glycoprotein of 110 kD that is expressed predominantly on the lysosomal membrane of myeloid cells. Weak cell surface expression also occurs. The antigen is expressed by the majority of tissue macrophages and weakly by peripheral blood granulocytes.
Formulation:	PBS, pH 7.4 containing 0.09% Sodium Azide as preservative State: Purified State: Liquid purified IgG fraction
Concentration:	lot specific
Purification:	Affinity Chromatography on Protein G
Conjugation:	Unconjugated



[View online »](#)

<b>Storage:</b>	Store undiluted at 2-8°C for one month or (in aliquots) at -20°C for longer. Avoid repeated freezing and thawing.
<b>Stability:</b>	Shelf life one year from despatch.
<b>Gene Name:</b>	Cd68 molecule
<b>Database Link:</b>	<a href="#">Entrez Gene 287435 Rat Q4FZY1</a>
<b>Background:</b>	The CD68 antigen is a 37kD transmembrane protein that is post-translationally glycosylated to give a protein of 87-115kD. CD68 is specifically expressed by tissue macrophages, Langerhans cells and at low levels by dendritic cells. It could play a role in phagocytic activities of tissue macrophages, both in intracellular lysosomal metabolism and extracellular cell-cell and cell-pathogen interactions. It binds to tissue- and organ-specific lectins or selectins, allowing homing of macrophage subsets to particular sites. Rapid recirculation of CD68 from endosomes and lysosomes to the plasma membrane may allow macrophages to crawl over selectin bearing substrates or other cells.
<b>Synonyms:</b>	Gp110, Macrosialin, Macrophage marker
<b>Note:</b>	Studies have shown that the antigen recognised by ED1 is the Rat homologue of Human CD68.

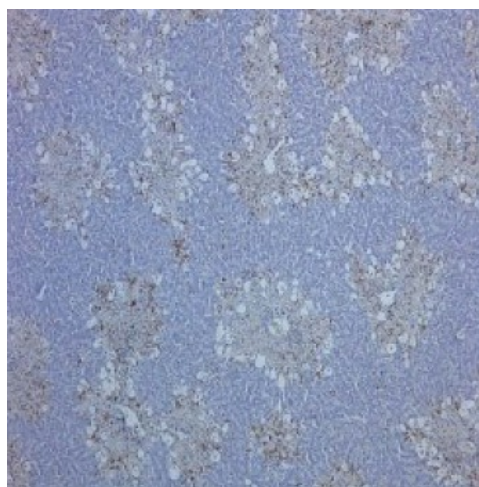
**Product images:**

Figure 2. Staining of ED1 antibody on Rat spleen (frozen section)

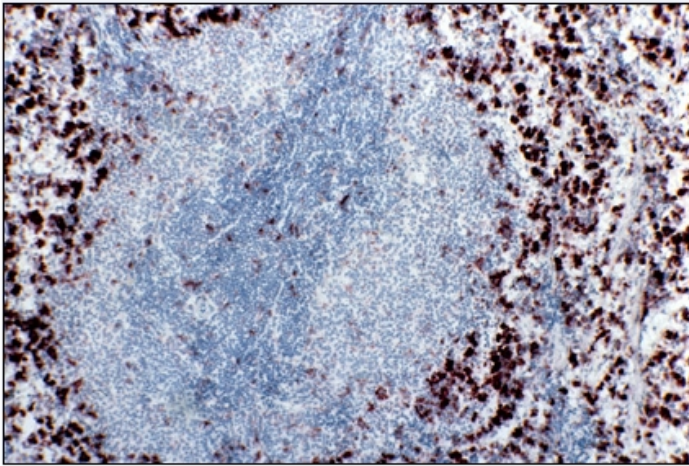


Figure 1. Staining of rat liver, with induced hepatocellular damage, with Mouse anti Rat CD68 antibody