

Product datasheet for **BM311PT**

CD62E (SELE) (+CD62P) Mouse Monoclonal Antibody [Clone ID: 1.2B6]

Product data:

Product Type:	Primary Antibodies
Clone Name:	1.2B6
Applications:	ELISA, FC, IHC, IP, WB
Recommended Dilution:	Immunohistochemistry on Frozen Sections: 1-10 µg/ml. Positive Control: Human Tonsil. ELISA: 10 µg/ml. Western Blot (Non-reduced only): Use 10 µl of the suggested working dilution to label 1 ⁰ cells in 100 µl. Flow Cytometry: 10 µg/ml. Immunoprecipitation.
Reactivity:	Human, Porcine
Host:	Mouse
Isotype:	IgG1
Clonality:	Monoclonal
Immunogen:	Human E-Selectin (ELAM-1)
Specificity:	This antibody recognizes the CD62E and CD62P cell surface antigens. The antibody inhibits neutrophil adhesion to E-selectin and to P-selectin. Although previously thought to recognize only Human CD62E, recent data (Goda et al. 2003) shows that this antibody also recognizes Human CD62P binding to a common epitope on these members of the selectin family. Clone 1.2B6 reacts with Porcine E-selectin (CD62E) but not with porcine P-selectin (Stocker et al. 200).
Formulation:	Phosphate buffered saline containing 0.09% Sodium Azide State: Purified State: Liquid purified IgG fraction
Concentration:	lot specific
Purification:	Affinity Chromatography on Protein A
Conjugation:	Unconjugated
Storage:	Store undiluted at 2-8°C for one month or (in aliquots) at -20°C for longer. Avoid repeated freezing and thawing.



[View online »](#)

Stability: Shelf life: one year from despatch.

Gene Name: selectin E

Database Link: [Entrez Gene 6401 Human P16581](#)

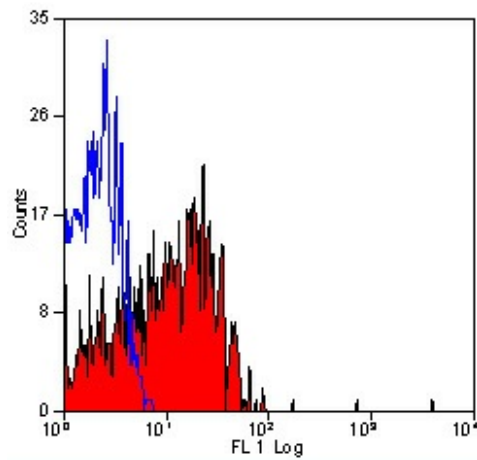
Background: CD62P is a member of the small selectin family of cellular adhesion molecules, which also includes CD62E and CD62L. Its structure, similar to the other members of the selectin family, consists of an N terminal lectin like domain of C type, followed by an epidermal growth factor like motif, a series of short consensus repeats, a transmembrane domain, and a cytoplasmic tail. The CD62P antigen is a 140 kDa glycoprotein, located in the alpha granules and the dense granules of platelets and endothelial cells. Activation of these cells results in rapid mobilization of CD62P from the storage granules to the cell surface. Activated platelets have a stable CD62P expression, while the endothelial cells lose CD62P expression within 1 h of activation, because of endocytosis of the molecule. CD62P is also expressed on megakaryocytes, but resting platelets and endothelial cells show no surface staining of CD62P.

Synonyms: SELE, ELAM1, LECAM2

Protein Families: Druggable Genome, Transmembrane

Protein Pathways: Cell adhesion molecules (CAMs)

Product images:



Staining of thrombin activated human peripheral blood platelets with mouse anti human CD62E/CD62P