

Product datasheet for **BM311**

CD62E (SELE) (+CD62P) Mouse Monoclonal Antibody [Clone ID: 1.2B6]

Product data:

Product Type:	Primary Antibodies
Clone Name:	1.2B6
Applications:	ELISA, FC, IF, IHC, WB
Recommended Dilution:	ELISA: 10 µg/ml. Immunofluorescence. Flow Cytometry: Use 10 µl of 10 µg/ml antibody to label 1 x 10 ⁶ cells in 100 µl. Immunohistochemistry on Frozen Sections: 1-10 µg/ml. Not recommended for Immunohistochemistry on Paraffin Sections. Western Blotting (non-reduced only).
Reactivity:	Human, Porcine
Host:	Mouse
Isotype:	IgG1
Clonality:	Monoclonal
Immunogen:	Human E-Selectin (ELAM-1).
Specificity:	This antibody recognizes the CD62E and CD62P cell surface antigens. Although previously thought to recognise only Human CD62E, recent data shows that this antibody also recognizes Human CD62P, binding to a common epitope shared by these members of the selectin family.
Formulation:	PBS containing 0.09% Sodium Azide as a preservative State: Purified State: Liquid purified IgG fraction
Concentration:	lot specific
Purification:	Protein A Affinity Chromatography
Conjugation:	Unconjugated
Storage:	Store the antibody undiluted at 2-8°C for one month or (in aliquots) at -20°C for longer. Avoid repeated freezing and thawing.
Stability:	Shelf life: one year from despatch.
Gene Name:	selectin E



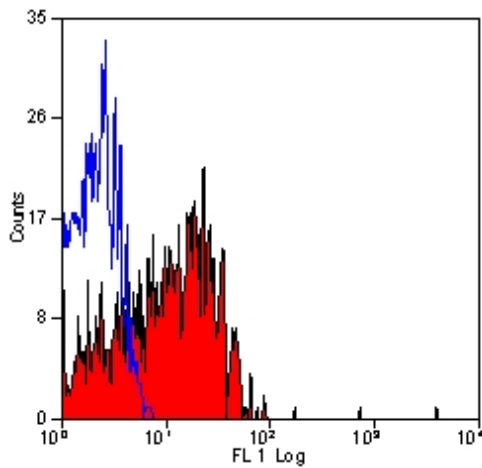
[View online »](#)

Database Link: [Entrez Gene 6401 Human P16581](#)

Background: Human E-Selectin (115 kD) and P-Selectin are expressed on activated endothelial cells. E-Selectin is expressed on neutrophils and may function in the early stages of neutrophil binding to the endothelium.

Synonyms: SELE, ELAM1, LECAM2

Product images:



Staining of Thrombin activated Human peripheral blood platelets with Mouse anti Human CD62E/CD62P antibody