

Product datasheet for **BM270S**

C-Peptide Mouse Monoclonal Antibody [Clone ID: C-PEP-01]

Product data:

Product Type:	Primary Antibodies
Clone Name:	C-PEP-01
Applications:	ELISA, IHC, R
Recommended Dilution:	RIA. ELISA. Immunocytochemistry. Immunohistochemistry on Paraffin Sections: 2-5 µg/ml. Pretreatment of paraffin sections with 0.1% Trypsin in PBS for 30 min at 37°C is recommended. <i>Positive Control:</i> Human pancreas (islets of Langerhans). According to customer information this antibody does not work in Western blotting.
Reactivity:	Human
Host:	Mouse
Isotype:	IgG1
Clonality:	Monoclonal
Immunogen:	Human C-peptide conjugated to Bovine Serum Albumin
Specificity:	This antibody <i>clone C-PEP-01</i> reacts specifically with C-peptide of Proinsulin. No cross-reactivity with Insulin or other peptide hormones or proteins was observed.
Formulation:	PBS, pH~7.4 State: Purified State: Liquid purified Ig fraction (> 95% pure by SDS-PAGE) Preservative: 15 mM Sodium Azide
Concentration:	lot specific
Purification:	Precipitation Methods
Conjugation:	Unconjugated
Storage:	Store undiluted at 2-8°C. DO NOT FREEZE!
Stability:	Shelf life: one year from despatch.

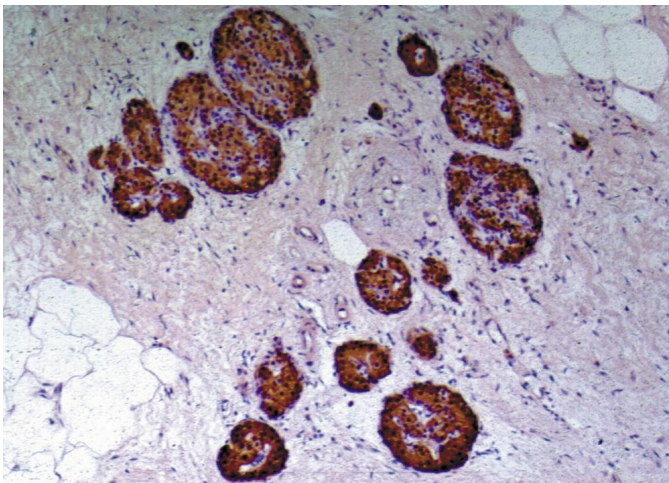


[View online »](#)

Background: Proinsulin consists of the three parts: C-peptide and two long strands of amino acids (alpha and beta chains; later become linked together to form the Insulin molecule). From every molecule of Proinsulin, one molecule of Insulin plus one molecule of C-peptide are produced. C-peptide is released into the blood stream in equal amounts to Insulin.

Synonyms: Proinsulin, Connecting Peptide

Product images:



Immunohistochemistry staining of human pancreas (paraffin-embedded sections) with anti-human to C-peptide of Proinsulin (C-PEP-01).