

## Product datasheet for **BM2472**

### MAP2 (2a + 2b) Mouse Monoclonal Antibody [Clone ID: AP20]

#### Product data:

|                       |  |
|-----------------------|--|
| Product Type:         | Primary Antibodies   |
| Clone Name:           | AP20   |
| Applications:         | IF, IHC, WB  |
| Recommended Dilution: | <b>Immunohistochemistry on Frozen Sections:</b> 1/500.<br><b>Immunofluorescence:</b> 1/500.<br><b>Western Blotting:</b> 1-2 µg/ml for 2hrs at RT.  |
| Reactivity:           | Bovine, Chicken, Human, Mouse, Rat   |
| Host:                 | Mouse  |
| Isotype:              | IgG1   |
| Clonality:            | Monoclonal   |
| Immunogen:            | Bovine brain Microtubule Associated Protein 2.   |
| Specificity:          | This antibody recognizes (Mr300 kDa) MAP-2 protein from bovine brain. The antibody strongly cross-reacts with MAP-2 from Human, Rat, Mouse and Chicken brains. BM2472 reacts with the High Molecular Weight forms (2a & 2b) of MAP-2 but not with the Low Molecular Weight (70 kDa) form (2c).<br>It reacts with dendrites and cell bodies of neurons. |
| Formulation:          | 0.01M PBS pH 7.4 containing 1% BSA as stabilizer and 0.09% Sodium Azide as a preservative.<br>State: Purified<br>State: Liquid purified Ig fraction.   |
| Concentration:        | lot specific   |
| Purification:         | Protein G Chromatography.  |
| Conjugation:          | Unconjugated   |
| Storage:              | Store the antibody undiluted at 2-8°C for one month or (in aliquots) at -20°C for longer.<br>Avoid repeated freezing and thawing.  |
| Stability:            | Shelf life: one year from despatch.  |
| Gene Name:            | microtubule associated protein 2   |



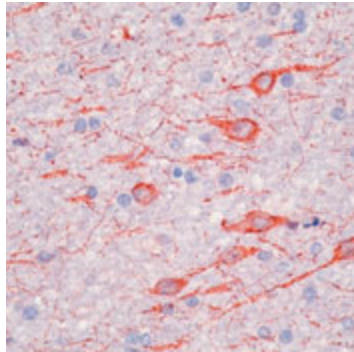
[View online »](#)

**Database Link:** [Entrez Gene 4133 Human P11137](#)

**Background:** MAP2 is the major microtubule associated protein of brain tissue. There are three forms of MAP2; two are similarly sized with apparent molecular weights of 280 kDa (MAP2a and MAP2b) and the third with a lower molecular weight of 70 kDa (MAP2c). The expression of MAP2 is developmentally regulated and its multiple forms arise by alternative splicing of a single gene.

**Synonyms:** Microtubule-associated protein 2, MAP2, Neuronal Marker

**Product images:**



Formalin-fixed, paraffin-embedded human brain stained with Microtubule-Associated Protein 2a, b Ab using peroxidase-conjugate and AEC chromogen. Note cytoplasmic staining of the neurons and dendrites.