

Product datasheet for **BM2401R**

CD56 (NCAM1) Mouse Monoclonal Antibody [Clone ID: MEM-188]

Product data:

Product Type:	Primary Antibodies
Clone Name:	MEM-188
Applications:	FC
Recommended Dilution:	Flow Cytometry analysis of human blood cells using 20 µl reagent / 100 ml of whole blood or 10 ⁶ cells in a suspension.
Reactivity:	Human, Primate
Host:	Mouse
Isotype:	IgG2a
Clonality:	Monoclonal
Immunogen:	KG-1 human acute myelogenous leukemia cell line
Specificity:	The antibody MEM-188 reacts with a 180 kDa isoform of CD56 (NCAM) expressed in leukocytes. It has been suggested that the antibody MEM-188 could react with rhesus monkey lymphocytes. Reactivity with other NCAM isoforms has not been tested.
Formulation:	Phosphate buffered saline (PBS) containing 15 mM sodium azide Label: PE State: Liquid purified Ig fraction Label: Conjugated with R-Phycoerythrin under optimum conditions. The conjugate is purified by size-exclusion chromatography and adjusted for direct use.
Conjugation:	PE
Storage:	Store the antibody at 2 - 8 °C. DO NOT FREEZE! This product is photosensitive and should be protected from light.
Stability:	Shelf life: one year from despatch.
Gene Name:	neural cell adhesion molecule 1
Database Link:	Entrez Gene 4684 Human P13591



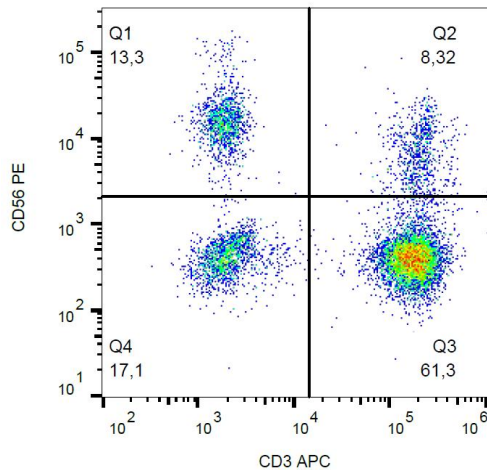
[View online »](#)

Background:

CD56 (NCAM, neural cell adhesion molecule) is a transmembrane glycoprotein of immunoglobulin family serving as adhesive molecule which is ubiquitously expressed in nervous system, usually as 120 kDa, 140 kDa or 180 kDa isoform, and it is also found on T cells and NK cells. Polysialic modification results in reduction of CD56-mediated cell adhesion and is involved in cell migration, axonal growth, pathfinding and synaptic plasticity. CD56 is a widely used neuroendocrine marker with a high sensitivity for neuroendocrine tumours and ovarian granulosa cell tumours.

Synonyms:

NCAM-1, N-CAM-1, NCAM

Product images:

Surface staining of human peripheral blood lymphocytes with anti-CD56 (MEM-188) PE.