

## Product datasheet for **BM2274F**

### EPCAM Mouse Monoclonal Antibody [Clone ID: HEA125]

#### Product data:

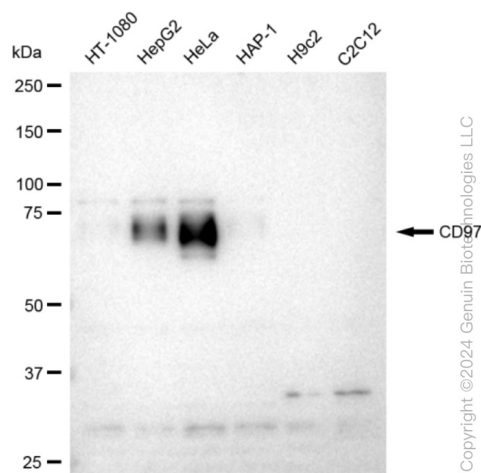
Product Type:	Primary Antibodies
Clone Name:	HEA125
Applications:	IF, IHC
Recommended Dilution:	<b>Immunofluorescence Microscopy.</b> <b>Cell Sorting.</b> <b>Cytological Material.</b> <b>Immunohistochemistry on Frozen Sections and Paraffin-Embedded Sections.</b> With Paraffin embedded sections, protease pretreatment is required prior to antibody application. <b>Working Dilution:</b> Dilute at least 1/10 with PBS, pH 7.4 for Immunohistochemical application. <b>Incubation Time:</b> 1 h at RT.
Reactivity:	Human
Host:	Mouse
Isotype:	IgG1
Clonality:	Monoclonal
Immunogen:	HT-29 colon carcinoma cell line
Specificity:	The Ep-CAM (HEA125) antibody recognizes the epithelial cell adhesion molecule Ep-CAM (also described as 17-1A antigen or EPG34). This antigen is widely expressed on cells of epithelial origin and tumors derived therefrom. HEA125 represents an excellent marker to discriminate epithelial from mesothelial structures. The antigen has been detected in all carcinoma types tested (18 different origins). A subset of squamous cell carcinoma is negative. <b>Tested Reactivities on Cultured Cell Lines:</b> All carcinoma cell lines tested so far; particularly strong reaction with colon carcinoma cell lines (HT-29, WiDr, SW1116). <b>Polypeptide Reacting:</b> Mr 40,000 human epithelium-specific cell surface glycoprotein (Ep-CAM).
Formulation:	Liquid purified Ig fraction with 0.09% Sodium Azide Label: Fluorescein Isothiocyanate Isomer 1 (FITC)
Purification:	Affinity Chromatography on Protein A
Conjugation:	FITC



[View online »](#)

<b>Storage:</b>	Store undiluted at 2-8°C for one month or (in aliquots) at -20°C for longer. This product is photosensitive and should be protected from light. Avoid repeated freezing and thawing.
<b>Stability:</b>	Shelf life: one year from despatch.
<b>Gene Name:</b>	epithelial cell adhesion molecule
<b>Database Link:</b>	<a href="#">Entrez Gene 4072 Human P16422</a>
<b>Background:</b>	Epithelial Cell Adhesion Molecule (EpCAM) is a 40 kDa cell surface antigen. This antigen has been identified independently by a number of groups, and has been known by a variety of names. Several monoclonal antibodies have been raised against EpCAM, many of which have been described as tumour specific molecules on carcinomas. EpCAM is a Type 1 transmembrane glycoprotein. It is expressed on the basolateral membrane of cells by the majority of epithelial tissues, with the exception of adult squamous epithelium and some specific epithelial cell types including hepatocytes and gastric epithelial cells. EpCAM expression has been reported to be a possible marker of early malignancy, with expression being increased in tumour cells, and de novo expression being seen in dysplastic squamous epithelium.
<b>Synonyms:</b>	Ep-CAM, Epithelial cell adhesion molecule, GA733-2, EGP314, KSA, TROP1, Trop-1, M1S2, M4S1, MIC18

### Product images:



Western blotting analysis using anti-CD97 antibody . Total cell lysates (30 µg) from various cell lines were loaded and separated by SDS-PAGE. The blot was incubated with anti-CD97 antibody and HRP-conjugated goat anti-rabbit secondary antibody respectively. Image was developed using anti-FeQ™ ECL Substrate Kit .

