

Product datasheet for **BM2226LE**

IGF1 Receptor (IGF1R) (alpha chain) Mouse Monoclonal Antibody [Clone ID: 1H7]

Product data:

Product Type:	Primary Antibodies
Clone Name:	1H7
Applications:	FC, FN, IHC, WB
Recommended Dilution:	Functional Assays. Western blotting. Flow Cytometry: Use 10 µl of 1/10 diluted antibody to label 1 ⁰ cells in 100 µl. Immunohistochemistry on Paraffin Sections: 1/10-1/40. This product requires protein digestion pre-treatment of paraffin sections e.g trypsin or pronase. Use pancreas or placenta as histology positive control tissue.
Reactivity:	Human
Host:	Mouse
Isotype:	IgG1
Clonality:	Monoclonal
Immunogen:	Purified Human placental IGF-I receptor.
Specificity:	Clone <i>1H7</i> recognizes an epitope in the alpha subunits of CD221, demonstrated by Western blotting (Ref.1). Clone <i>1H7</i> is reported to partially block binding of IGF-I and IGF-II to CD221 (Ref.1)
Formulation:	PBS without preservatives or stabilizers State: Low Endotoxin State: Liquid (sterile filtered) purified IgG fraction from tissue culture supernatant
Concentration:	lot specific
Purification:	Affinity Chromatography on Protein G
Conjugation:	Unconjugated
Storage:	Upon receipt, store undiluted (in aliquots) at -20°C. Avoid repeated freezing and thawing.
Stability:	Shelf life: one year from despatch.
Gene Name:	insulin like growth factor 1 receptor



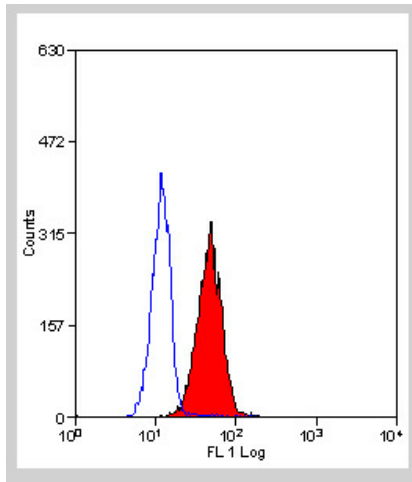
[View online »](#)

Database Link: [Entrez Gene 3480 Human P08069](#)

Background: CD221, a 155 kD tyrosine kinase, is composed of two extracellular alpha-subunits and two transmembrane beta-subunits. CD221 is expressed in a range of tissues, including kidney, liver, placenta, mammary gland, brain, ovary and skin. The ligands for CD221 include IGF-I and IGF-II, which bind to CD221 and activate tyrosine kinase activity, resulting in phosphorylation of several intracellular signalling proteins.

Synonyms: IGF-I receptor, IGF1 Receptor

Product images:



Staining of human peripheral blood granulocytes with Mouse anti Human CD221-Low Endotoxin Cat.,-No (Clone 1H7).