

Product datasheet for **BM1049F**

Cryptosporidium Mouse Monoclonal Antibody [Clone ID: BEL0126]

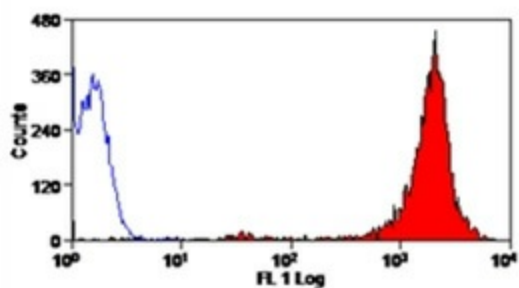
Product data:

Product Type:	Primary Antibodies
Clone Name:	BEL0126
Applications:	FC, IF
Recommended Dilution:	Immunofluorescence. Flow Cytometry: 1/5-1/50; Use 10 µl of the suggested working dilution to label 1x10e6 cells in 100 µl.
Reactivity:	Cryptosporidium parvum
Host:	Mouse
Isotype:	IgG3
Clonality:	Monoclonal
Immunogen:	Purified oocysts from bovine faeces.
Specificity:	This antibody recognises a membrane antigen expressed by the oocysts of Cryptosporidium parvum.
Formulation:	PBS, pH 7.4 containing 0.09 % Sodium Azide and 1 % Bovine serum albumin Label: FITC State: Liquid purified IgG fraction
Concentration:	lot specific
Purification:	Affinity chromatography on Protein G
Conjugation:	FITC
Storage:	Store the antibody undiluted at 2-8°C for one month or (in aliquots) at -20°C for longer. Avoid repeated freezing and thawing. This product is photosensitive and should be protected from light.
Stability:	Shelf life: one year from despatch.
Background:	Cryptosporidium parvum is a parasitic organism that is an important cause of enteric disease in humans and animals. The oocyst stage is of primary importance for the dispersal, survival, and infectivity of the parasite and for detection and identification. BEL 0126 has been used to detect of cryptosporidiosis in human and bovine faeces.



[View online »](#)

Product images:



Staining of *Cryptosporidium parvum* oocytes with Mouse anti *C. parvum*: FITC (BM1049F)