

## Product datasheet for **BCRT103**

### TissueScan, Breast Cancer cDNA Array III

#### Product data:

Product Type:	TissueScan
Array Category:	Cancer Specific
Clinical Info:	/assets/documents/tissuescan/bcrt103.xls
Diagnosis Category:	Breast Cancer
Tissue:	Breast
Array Name:	Breast Cancer cDNA Array III

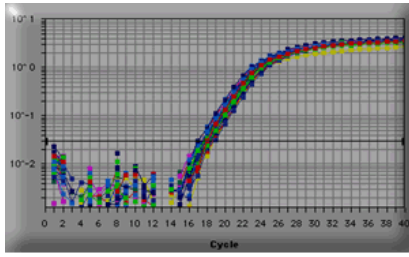
#### Product images:



TissueScan product image.

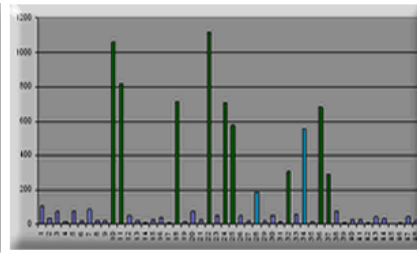


[View online »](#)



A Human Breast Cancer real time PCR Gene Expression panel used in real-time PCR. The beta-actin contents in the 48 human cDNAs were detected using SYBR Green I protocol and performed in PE7700.

Fluorescence reading - cycle number.



A Human Breast Cancer real time PCR Gene Expression panel was used in SYBR Green I based real-time PCR. The expression profile of the human HER-2 transcript (ACC#:  
NM\_001005862) was detected using SYBR Green I protocol and performed in PE7700.

Normalized relative expression among 48 Breast samples