

Product datasheet for BA1014S

Neurofilament H (200 kD) Bovine Protein

Product data:

Product Type:	Native Proteins
Description:	Neurofilament H (200 kD) bovine protein, 0.1 mg
Species:	Bovine
Protein Source:	Spinal Cord
Predicted MW:	200 kDa
Concentration:	lot specific
Purity:	>98% (determined by SDS gelelectrophoresis)
Buffer:	Presentation State: Purified State: Lyophilized
Reconstitution Method:	Restore with 80 µl distilled water (final volume 100 µl). Final solution: 10mM Sodium Phosphate, pH 7.5, 2mM DTT, 6M Urea, 10 mM methylammonium chloride, 1 mM EDTA.
Preparation:	Lyophilized
Applications:	Protein standard in 1D and 2D SDS gelelectrophoresis. Immunoassays. Immunization.
Protein Description:	Bovine Neurofilament 200 kDa
Note:	Isoelectric Point: pI 5.5 Suitable to rebuild protofilaments and filaments under conditions of reconstitution.
Storage:	Store at 2-8°C (lyophilized) or at -20°C (reconstituted). Avoid repeated freezing and thawing.
Stability:	Shelf life: one year from despatch.
RefSeq:	NP_066554
Locus ID:	4744
Cytogenetics:	22q12.2
Synonyms:	NEFH,NF-H,KIAA0845, NFH, 200 kDa neurofilament protein, Neurofilament triplet H protein, (Neuronal Marker), heavy polypeptide



[View online »](#)

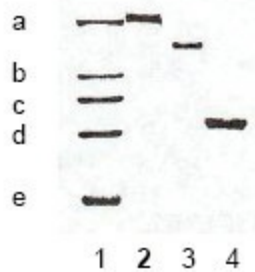
Summary: Neurofilaments are type IV intermediate filament heteropolymers composed of light, medium, and heavy chains. Neurofilaments comprise the axoskeleton and functionally maintain neuronal caliber. They may also play a role in intracellular transport to axons and dendrites. This gene encodes the heavy neurofilament protein. This protein is commonly used as a biomarker of neuronal damage and susceptibility to amyotrophic lateral sclerosis (ALS) has been associated with mutations in this gene. [provided by RefSeq, Oct 2008]

Protein Families: Protein standard in 1D and 2D SDS gelelectrophoresis.
Immunoassays.
Immunization.

Protein Pathways: Amyotrophic lateral sclerosis (ALS)

Product images:

1. myosin (a)
β-galactosidase (b)
phosphorylase B (c)
BSA (d)
ovalbumin (e)
2. **Mr 200 kD Neurofilament**
3. **Mr 160 kD Neurofilament**
4. **Mr 68 kD Neurofilament**



Lane 1 shows myosin (a), beta-galactosidase (b), phosphorylase B (c), BSA (d) and ovalbumin (e) as markers
Lane 2 shows Cat.No. [BA1014]/BA1014S Neurofilament H (200 kD)
Lane 3 shows Cat.No. [BA1013]/[BA1013S] Neurofilament M (160 kD)
Lane 4 shows Cat.No. [BA1012]/[BA1012S] Neurofilament L (68kDa)