

Product datasheet for **AR52072PU-N**

KITLG / SCF (26-189) Mouse Protein

Product data:

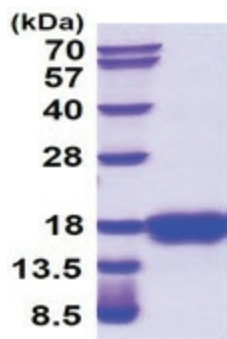
Product Type:	Recombinant Proteins
Description:	KITLG / SCF (26-189) mouse protein, 20 µg
Species:	Mouse
Expression Host:	E. coli
Expression cDNA Clone or AA Sequence:	MKEICGNPVT DNVKDITKLV ANLPNDYMIT LNYVAGMDVL PSHCWLRDMV IQLSLSLTLL LDKFSNISEG LSNYSIIDKL GKIVDDLVC MEENAPKNIK ESPKRPETRS FTPEEFSIF NRSIDAFKDF MVASDTSDCV LSSTLGPEKD SRVSVTKPFM LPPVA
Predicted MW:	18 kDa
Concentration:	lot specific
Purity:	>95% by SDS - PAGE
Buffer:	Presentation State: Purified State: Liquid purified protein Buffer System: Phosphate buffer saline (pH 7.4) containing 10% glycerol.
Bioactivity:	Specific: Measured in a cell proliferation assay using MC/9 mouse mast cells. The ED50 for this effect is less or equal to 20 ng/ml.
Endotoxin:	< 1.0 EU per 1 microgram of protein (determined by LAL method)
Preparation:	Liquid purified protein
Storage:	Store undiluted at 2-8°C for one week or (in aliquots) at -20°C to -80°C for longer. Avoid repeated freezing and thawing.
Stability:	Shelf life: one year from despatch.
RefSeq:	NP_001334085
Locus ID:	17311
UniProt ID:	P20826
Cytogenetics:	10 51.4 cM
Synonyms:	blz; Clo; Con; contrasted; Gb; Kitlg; Mgf; SCF; SF; Sl; SLF



[View online »](#)

Summary:

Ligand for the receptor-type protein-tyrosine kinase KIT. Plays an essential role in the regulation of cell survival and proliferation, hematopoiesis, stem cell maintenance, gametogenesis, mast cell development, migration and function, and in melanogenesis. KITLG/SCF binding can activate several signaling pathways. Promotes phosphorylation of PIK3R1, the regulatory subunit of phosphatidylinositol 3-kinase, and subsequent activation of the kinase AKT1. KITLG/SCF and KIT also transmit signals via GRB2 and activation of RAS, RAF1 and the MAP kinases MAPK1/ERK2 and/or MAPK3/ERK1. KITLG/SCF and KIT promote activation of STAT family members STAT1, STAT3 and STAT5. KITLG/SCF and KIT promote activation of PLCG1, leading to the production of the cellular signaling molecules diacylglycerol and inositol 1,4,5-trisphosphate. KITLG/SCF acts synergistically with other cytokines, probably interleukins.[UniProtKB/Swiss-Prot Function]

Product images:

15% SDS-PAGE (3ug)