

Product datasheet for **AR52070PU-S**

CD153 / CD30L (63-234, His-tag) Human Protein

Product data:

Product Type:	Recombinant Proteins
Description:	CD153 / CD30L (63-234, His-tag) human protein, 20 µg
Species:	Human
Expression cDNA Clone or AA Sequence:	ADPQRTDSIP NSPDNVPLKG GNCSEDLLCI LKRAPFKKSW AYLQVAKHLN KTKLSWVKDG ILHGVRYQDG NLVIQFPGLY FIICQLQFLV QCPNNSVDLK LELLINKHIK KQALVTVCES GMQTKHVVQN LSQFLLDYLQ VNTTISVNVD TFQYIDTSTF PLENVLSIFL YSNSDHHHHH H
Tag:	His-tag
Predicted MW:	20.7 kDa
Concentration:	lot specific
Purity:	>85% by SDS - PAGE
Buffer:	Presentation State: Purified State: Liquid purified protein Buffer System: Phosphate Buffered Saline (pH 7.4) containing 10% glycerol.
Endotoxin:	< 1.0 EU per 1 microgram of protein (determined by LAL method)
Preparation:	Liquid purified protein
Storage:	Store undiluted at 2-8°C for one week or (in aliquots) at -20°C to -80°C for longer. Avoid repeated freezing and thawing.
Stability:	Shelf life: one year from despatch.
RefSeq:	NP_001235
Locus ID:	944
UniProt ID:	P32971 , Q52M88
Cytogenetics:	9q32-q33.1
Synonyms:	TNFSF8, CD30 Ligand, CD30LG, CD30-L



[View online »](#)

Summary:

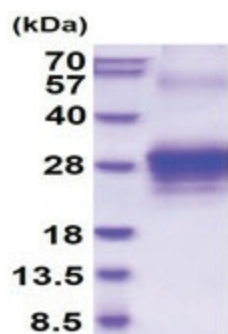
The protein encoded by this gene is a cytokine that belongs to the tumor necrosis factor (TNF) ligand family. This cytokine is a ligand for TNFRSF8/CD30, which is a cell surface antigen and a marker for Hodgkin lymphoma and related hematologic malignancies. The engagement of this cytokine expressed on B cell surface plays an inhibitory role in modulating Ig class switch. This cytokine was shown to enhance cell proliferation of some lymphoma cell lines, while to induce cell death and reduce cell proliferation of other lymphoma cell lines. The pleiotropic biologic activities of this cytokine on different CD30+ lymphoma cell lines may play a pathophysiologic role in Hodgkin's and some non-Hodgkin's lymphomas. Two transcript variants encoding different isoforms have been found for this gene. [provided by RefSeq, Nov 2011]

Protein Families:

Druggable Genome, Transmembrane

Protein Pathways:

Cytokine-cytokine receptor interaction

Product images:

15% SDS-PAGE (3ug)