

Product datasheet for **AR52068PU-N**

LDHA (1-332, His-tag) Mouse Protein

Product data:

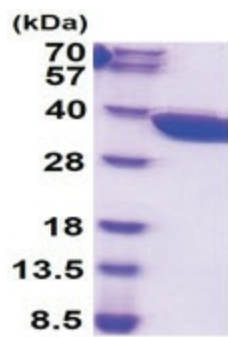
Product Type:	Recombinant Proteins
Description:	LDHA (1-332, His-tag) mouse protein, 50 µg
Species:	Mouse
Expression cDNA Clone or AA Sequence:	MATLKDQLIV NLLKEEQAPQ NKITWGVGA VGMACAISIL MKDLADELAL VDVMEKDKLG EMMDLQHGS LFLKTPKIVSS KDYCVTANSK LVIITAGARQ QEGESRLNLV QRNVNIFKFI IPNIVKYS PHCKLLIVSNPV DILTYVAWKI SGFPKNRVIG SGCNLD SARF RYLMGERLGV HALSCHGWVL GEHGDSSVPV WSGVNVAGVS LKSLNPELGT DADKEQWKEV HKQVVD SAYE VIKLKG YTSW AIGLSVADLA ESIMKNLRRV HPISTMIKGL YGINEDVFLS VPCILGQNGI SDVWKVTLTP EEEARLKKSA DTLWGIQKEL QFLEHHHHHH
Tag:	His-tag
Predicted MW:	37.5 kDa
Concentration:	lot specific
Purity:	>95% by SDS - PAGE
Buffer:	Presentation State: Purified State: Liquid purified protein Buffer System: Phosphate Buffered Saline (pH 7.4) containing 10% glycerol.
Bioactivity:	Specific: Specific activity is > 250 units/mg, and is defined as the Amount of enzyme that convert 1.0 umole of pyruvate to L-lactate and per minute at pH 7.5 at 37C.
Endotoxin:	< 1.0 EU per 1 microgram of protein (determined by LAL method)
Preparation:	Liquid purified protein
Storage:	Store undiluted at 2-8°C for one week or (in aliquots) at -20°C to -80°C for longer. Avoid repeated freezing and thawing.
Stability:	Shelf life: one year from despatch.
RefSeq:	NP_001129541
Locus ID:	16828
UniProt ID:	Q564E2 , A0A1B0GSX0
Cytogenetics:	7 30.6 cM
Synonyms:	I7; I7R2; LDH; Ldh-; Ldh1; Ldhm



[View online »](#)

Summary:

The protein encoded by this gene catalyzes the conversion of L-lactate and NAD to pyruvate and NADH in the final step of anaerobic glycolysis. The protein is found predominantly in muscle tissue and belongs to the lactate dehydrogenase family. Mutations in this gene have been linked to hemolytic anemia and early postimplantation death in mice. Multiple transcript variants encoding different isoforms have been found for this gene. The mouse genome contains multiple pseudogenes of this gene. [provided by RefSeq, May 2013]

Product images:

15% SDS-PAGE (3ug)