

Product datasheet for **AR52057PU-N**

CD207 / Langerin (65-328, His-tag) Human Protein

Product data:

Product Type:	Recombinant Proteins
Description:	CD207 / Langerin (65-328, His-tag) human protein, 0.25 mg
Species:	Human
Expression cDNA Clone or AA Sequence:	ADPPRFMGTI SDVKTNVQLL KGRVDNISTL DSEIKKNSDG MEAAGVQIQM VNESLGYVRS QFLKLTSTVE KANAQIQILT RSWEVSTLN AQIPKLSDL EKASALNTKI RALQGSLENM SKLLKRQNDI LQVWSQGWKY FKGNYFYFSL IPKTWYSAEQ FCVSRNSHLT SVTSESEQEF LYKTAGGLIY WIGLTKAGME GDWSWVDDTP FNKVQSARFW IPGEPNAGN NEHCGNIKAP SLQAWNDAPC DKTFLFICKR PYVPSEPHHH HHH
Tag:	His-tag
Predicted MW:	30.9 kDa
Concentration:	lot specific
Purity:	>90% by SDS - PAGE
Buffer:	Presentation State: Purified State: Liquid purified protein Buffer System: Phosphate Buffered Saline (pH 7.4) containing 10% glycerol.
Endotoxin:	< 1.0 EU per 1 microgram of protein (determined by LAL method)
Preparation:	Liquid purified protein
Storage:	Store undiluted at 2-8°C for one week or (in aliquots) at -20°C to -80°C for longer. Avoid repeated freezing and thawing.
Stability:	Shelf life: one year from despatch.
RefSeq:	NP_056532
Locus ID:	50489
UniProt ID:	Q9UJ71
Cytogenetics:	2p13.3
Synonyms:	CLEC4K



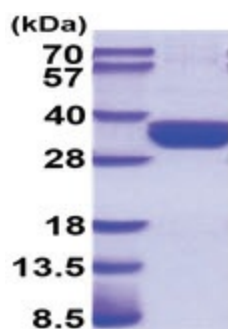
[View online »](#)

Summary:

The protein encoded by this gene is expressed only in Langerhans cells which are immature dendritic cells of the epidermis and mucosa. It is localized in the Birbeck granules, organelles present in the cytoplasm of Langerhans cells and consisting of superimposed and zippered membranes. It is a C-type lectin with mannose binding specificity, and it has been proposed that mannose binding by this protein leads to internalization of antigen into Birbeck granules and providing access to a nonclassical antigen-processing pathway. Mutations in this gene result in Birbeck granules deficiency or loss of sugar binding activity. [provided by RefSeq, Aug 2010]

Protein Families:

Druggable Genome, Transmembrane

Product images:

15% SDS-PAGE (3ug)