

## Product datasheet for **AR52047PU-S**

### CD47 (19-141, hlgG-His tag) Human Protein

#### Product data:

Product Type:	Recombinant Proteins
Description:	CD47 (19-141, hlgG-His tag) human protein, 50 µg
Species:	Human
Expression cDNA Clone or AA Sequence:	QLLFNKTKSV EFTFCNDTW IPCFVTNMEA QNTTEVYVKW KFKGRDIYTF DGALNKSTVP TDFSSAKIEV SLLKGDASL KMDKSDAVSH TGNYTCEVTE LTREGETIIE LKYRVVSWFS PNELEPKSCD KTHTCPPCPA PELLGGPSVF LFPPKPKDTL MISRTPEVTC VVDVSHEDP EVKFNWYVDG VEVHNAKTKP REEQYNSTYR VSVLTVLHQ DWLNGKEYKC KVS NKALPAP IEKTISKAKG QPREPQVYTL PPSRDELTKN QVSLTCLVKG FYP SDIAVEW ESNGQPENNY KTT PPVLDSD GSFFLYSKLT VDKSRWQQGN VFSCSVMHEA LHNHYTQKSL SLSPGKHHHH HH
Tag:	hlgG-His-tag
Predicted MW:	40.9 kDa
Concentration:	lot specific
Purity:	>95% by SDS - PAGE
Buffer:	Presentation State: Purified State: Liquid purified protein Buffer System: Phosphate Buffered Saline (pH 7.4) containing 10% glycerol.
Endotoxin:	< 1.0 EU per 1 microgram of protein (determined by LAL method)
Preparation:	Liquid purified protein
Storage:	Store undiluted at 2-8°C for one week or (in aliquots) at -20°C to -80°C for longer. Avoid repeated freezing and thawing.
Stability:	Shelf life: one year from despatch.
RefSeq:	<a href="#">NP_001768</a>
Locus ID:	961
UniProt ID:	<a href="#">Q08722</a>
Cytogenetics:	3q13.12
Synonyms:	MER6, IAP, OA3



[View online »](#)

**Summary:**

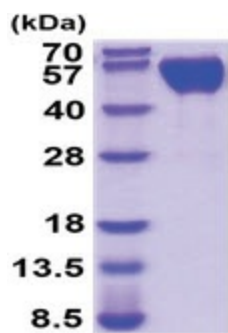
This gene encodes a membrane protein, which is involved in the increase in intracellular calcium concentration that occurs upon cell adhesion to extracellular matrix. The encoded protein is also a receptor for the C-terminal cell binding domain of thrombospondin, and it may play a role in membrane transport and signal transduction. This gene has broad tissue distribution, and is reduced in expression on Rh erythrocytes. Alternatively spliced transcript variants have been found for this gene. [provided by RefSeq, Jul 2010]

**Protein Families:**

Druggable Genome, Transmembrane

**Protein Pathways:**

ECM-receptor interaction

**Product images:**

15% SDS-PAGE (3ug)