

Product datasheet for **AR52046PU-N**

TNFRSF18 / GITR (26-162, hIgG-His tag) Human Protein

Product data:

Product Type:	Recombinant Proteins
Description:	TNFRSF18 / GITR (26-162, hIgG-His tag) human protein, 0.25 mg
Species:	Human
Expression cDNA Clone or AA Sequence:	QRPTGGPGCG PGRLLLGTGT DARCCRVHTT RCCRDYPGEE CCSEWDCMCV QPEFHC GDPC CTTCRHHPCP PGQGVQSQ GK FSGFQCIDC ASGTFSGGHE GHCKPWT DCT QFGFLTVPFG NKTHNAV CVP GSPPAEPLP KSCDKTHTCP PCPAPELLGG PSVFLFPPKP KDTLMISRTP EVTCVV DVS HEDPEVKFNW YVDGVEVHNA KTKPREEQYN STYRVVSVLT VLHQDWLNGK EYKCKVSNKA LPAPIEKTIS KAKGQPREPQ VYTLPPSRDE LTKNQVSLTC LVKGFYPSDI AVEWESNGQP ENNYKTPPV LDSDGSFFLY SKLTVDKSRW QQGNVFSCSV MHEALHNHYT QKSLSLSPGK HHHHHH
Tag:	hIgG-His-tag
Predicted MW:	41.6 kDa
Concentration:	lot specific
Purity:	>95% by SDS - PAGE
Buffer:	Presentation State: Purified State: Liquid purified protein Buffer System: Phosphate Buffered Saline (pH 7.4) containing 10% glycerol.
Endotoxin:	< 1.0 EU per 1 microgram of protein (determined by LAL method)
Preparation:	Liquid purified protein
Storage:	Store undiluted at 2-8°C for one week or (in aliquots) at -20°C to -80°C for longer. Avoid repeated freezing and thawing.
Stability:	Shelf life: one year from despatch.
RefSeq:	NP_004186
Locus ID:	8784
UniProt ID:	Q9Y5U5
Cytogenetics:	1p36.33
Synonyms:	AITR



[View online »](#)

Summary:

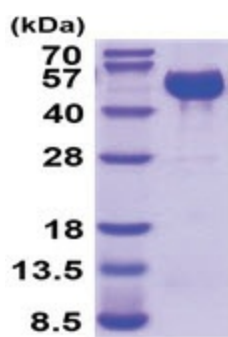
This gene encodes a member of the TNF-receptor superfamily. The encoded receptor has been shown to have increased expression upon T-cell activation, and it is thought to play a key role in dominant immunological self-tolerance maintained by CD25(+)CD4(+) regulatory T cells. Knockout studies in mice also suggest the role of this receptor is in the regulation of CD3-driven T-cell activation and programmed cell death. Three alternatively spliced transcript variants of this gene encoding distinct isoforms have been reported. [provided by RefSeq, Feb 2011]

Protein Families:

Druggable Genome, Secreted Protein, Transmembrane

Protein Pathways:

Cytokine-cytokine receptor interaction

Product images:

15% SDS-PAGE (3ug)