

Product datasheet for **AR52035PU-S**

Cathepsin B (18-339, His-tag) Mouse Protein

Product data:

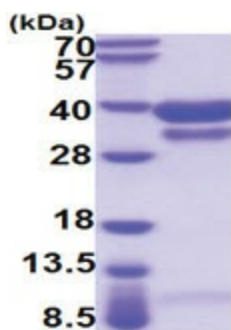
Product Type:	Recombinant Proteins
Description:	Cathepsin B (18-339, His-tag) mouse protein, 50 µg
Species:	Mouse
Expression cDNA Clone or AA Sequence:	HDKPSFHPLS DDLINYINKQ NTTWQAGRNF YNVDISYLKK LCGTVLGGPK LPGRVAFGED IDLPEFDAR EQWSNCPTIG QIRDQGSCGS CWAFGAVEAI SDRTCHTNG RVNVEVSAED LLTCCGIQCG DGCNGGYPSG AWSFWTKKGL VSGGVYNHSV GCLPYTIPPC EHHVNGSRPP CTGEGDTPRC NKSCEAGYSP SYKEDKHFGY TSYSVSNVSK EIMAEIYKNG PVEGAFTVFS DFLTYKSGVY KHEAGDMMGG HAIRILGWGV ENGVYWLAA NSWNLDWGDN GFFKILRGEN HCGIESEIVA GIPRTDQYWG RFLEHHHHHH
Tag:	His-tag
Predicted MW:	36.4 kDa
Concentration:	lot specific
Purity:	>90% by SDS - PAGE
Buffer:	Presentation State: Purified State: Liquid purified protein Buffer System: Phosphate Buffered Saline (pH 7.4) containing 10% glycerol.
Endotoxin:	< 1.0 EU per 1 microgram of protein (determined by LAL method)
Preparation:	Liquid purified protein
Storage:	Store undiluted at 2-8°C for one week or (in aliquots) at -20°C to -80°C for longer. Avoid repeated freezing and thawing.
Stability:	Shelf life: one year from despatch.
RefSeq:	NP_031824
Locus ID:	13030
UniProt ID:	P10605
Cytogenetics:	14 33.24 cM
Synonyms:	CB



[View online »](#)

Summary:

This gene encodes a member of the peptidase C1 family and preproprotein that is proteolytically processed to generate multiple protein products. These products include the cathepsin B light and heavy chains, which can dimerize to generate the double chain form of the enzyme. This enzyme is a lysosomal cysteine protease with both endopeptidase and exopeptidase activity that may play a role in protein turnover. Homozygous knockout mice for this gene exhibit reduced pancreatic damage following induced pancreatitis and reduced hepatocyte apoptosis in a model of liver injury. Pseudogenes of this gene have been identified in the genome. [provided by RefSeq, Aug 2015]

Product images:

15% SDS-PAGE (3ug)