

Product datasheet for **AR52034PU-S**

CD324 / Cadherin-1 (23-709, His-tag) Human Protein

Product data:

Product Type:	Recombinant Proteins
Description:	CD324 / Cadherin-1 (23-709, His-tag) human protein, 50 µg
Species:	Human
Expression Host:	Insect
Expression cDNA Clone or AA Sequence:	QEPEPCHPGF DAESYFTVP RRHLERGRVL GRVNFEDCTG RQRTAYFSLD TRFKVGTGDGV ITVKRPLRFH NPQIHFLVYA WDSTYRKFSK KVTLNVTGHH HRPPPHQASV SGIQAELLTF PNSSPGLRRQ KRDWWIPPIS CPENEKGPFP KNLVQIKSNK DKEGKVFYSI TGQGADTPPV GVFIERETG WLKVTEPLDR ERIATYTLFS HAVSSNGNAV EDPMEILITV TDQNDNKPEF TQEVFKGSVM EGALPGTSVM EVTATDADD VNTYNAAIAY TILSQDPELP DKNMFTINRN TGVISVTTG LDRESFPTYT LVVQAADLQG EGLSTTATAV ITVTDNDNP PIFNPTYKQ QVPENEANVW ITTLKVTADAP NTPAWEAV YLILNDDGGQ FVTTNPVNN DGILKTAKGL DFEAKQQYIL HVAVTNWPPEVSLTSTAT VTVDVLDVNE APIFVPPPEKR VESEDFGVG QEITSYTAQE PDTFMEQKIT YRIWRDTANW LEINPDTGAI STRAELDRED FEHVKNSTYT ALIATDNGS PVATGTGTL LILSDVNDNA PIPEPRTIFF CERNPKPQVI NIIDADLPPN TSPFTAELTH GASANWTIQY NDPTQESIIL KPKMALEVGD YKINLKLMDN QNKDQVTTL VSVCDCEGAA GVCRKAQVE AGLQIPALEH HHHHH
Tag:	His-tag
Predicted MW:	76.8 kDa
Concentration:	lot specific
Purity:	>90% by SDS – PAGE
Buffer:	Presentation State: Purified State: Liquid purified protein Buffer System: Phosphate Buffered Saline (pH 7.4) containing 10% glycerol.
Endotoxin:	< 1.0 EU per 1 microgram of protein (determined by LAL method)
Preparation:	Liquid purified protein
Storage:	Store undiluted at 2-8°C for one week or (in aliquots) at -20°C to -80°C for longer. Avoid repeated freezing and thawing.
Stability:	Shelf life: one year from despatch.
RefSeq:	NP_001304113
Locus ID:	999



[View online »](#)

UniProt ID: [P12830](#), [B3GN61](#)

Cytogenetics: 16q22.1

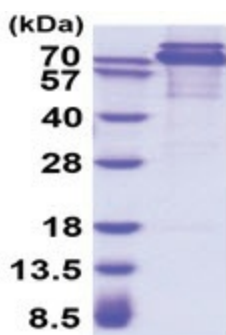
Synonyms: Arc-1; BCDS1; CD324; CDHE; ECAD; LCAM; UVO

Summary: This gene encodes a classical cadherin of the cadherin superfamily. Alternative splicing results in multiple transcript variants, at least one of which encodes a preproprotein that is proteolytically processed to generate the mature glycoprotein. This calcium-dependent cell-cell adhesion protein is comprised of five extracellular cadherin repeats, a transmembrane region and a highly conserved cytoplasmic tail. Mutations in this gene are correlated with gastric, breast, colorectal, thyroid and ovarian cancer. Loss of function of this gene is thought to contribute to cancer progression by increasing proliferation, invasion, and/or metastasis. The ectodomain of this protein mediates bacterial adhesion to mammalian cells and the cytoplasmic domain is required for internalization. This gene is present in a gene cluster with other members of the cadherin family on chromosome 16. [provided by RefSeq, Nov 2015]

Protein Families: Druggable Genome, ES Cell Differentiation/IPS, Transmembrane

Protein Pathways: Adherens junction, Bladder cancer, Cell adhesion molecules (CAMs), Endometrial cancer, Melanoma, Pathogenic Escherichia coli infection, Pathways in cancer, Thyroid cancer

Product images:



15% SDS-PAGE (3ug)