

Product datasheet for **AR52028PU-S**

TIMP2 (27-220, His-tag) Human Protein

Product data:

Product Type:	Recombinant Proteins
Description:	TIMP2 (27-220, His-tag) human protein, 20 µg
Species:	Human
Expression Host:	Insect
Expression cDNA Clone or AA Sequence:	CSCSPVHPQQ AFCNADVIR AKAVSEKEVD SGNDIYGNPI KRIQYEIKQI KMFKGPEKDI EFIYTAPSSA VCGVSLDVGG KKEYLIAGKA EGDGKMHTL CDFIVPWDTL STTQKKSLNH RYQMGCECKI TRCPMIPCYI SSPDECLWMD WVTEKNINGH QAKFFACIKR SDGSCAWYRG AAPPKQEFLD IEDPHHHHHH
Tag:	His-tag
Predicted MW:	22.5 kDa
Concentration:	lot specific
Purity:	>95% by SDS – PAGE
Buffer:	Presentation State: Purified State: Liquid purified protein Buffer System: Phosphate Buffered Saline (pH 7.4) containing 10% glycerol.
Endotoxin:	< 1.0 EU per 1 microgram of protein (determined by LAL method)
Preparation:	Liquid purified protein
Storage:	Store undiluted at 2-8°C for one week or (in aliquots) at -20°C to -80°C for longer. Avoid repeated freezing and thawing.
Stability:	Shelf life: one year from despatch.
RefSeq:	NP_003246
Locus ID:	7077
UniProt ID:	P16035 , A0A140VK57
Cytogenetics:	17q25.3
Synonyms:	CSC-21K; DDC8



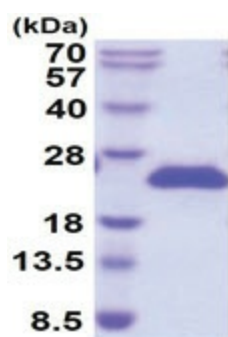
[View online »](#)

Summary:

This gene is a member of the TIMP gene family. The proteins encoded by this gene family are natural inhibitors of the matrix metalloproteinases, a group of peptidases involved in degradation of the extracellular matrix. In addition to an inhibitory role against metalloproteinases, the encoded protein has a unique role among TIMP family members in its ability to directly suppress the proliferation of endothelial cells. As a result, the encoded protein may be critical to the maintenance of tissue homeostasis by suppressing the proliferation of quiescent tissues in response to angiogenic factors, and by inhibiting protease activity in tissues undergoing remodelling of the extracellular matrix. [provided by RefSeq, Jul 2008]

Protein Families:

Druggable Genome, Secreted Protein

Product images:

15% SDS-PAGE (3ug)