

Product datasheet for **AR52027PU-N**

FGF21 (29-210, His-tag) Mouse Protein

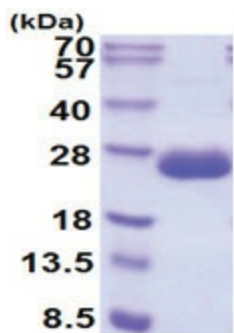
Product data:

| | |
|---------------------------------------|---|
| Product Type: | Recombinant Proteins |
| Description: | FGF21 (29-210, His-tag) mouse protein, 0.25 mg |
| Species: | Mouse |
| Expression Host: | Insect |
| Expression cDNA Clone or AA Sequence: | AYPIPDSSPL LQFGGQVRQR YLYTDDDQDT EAHLEIREDG TVGAAHRSP ESLELALKALK PGVIQILGVK ASRFLCQQPD GALYGSPHFD PEACSFRELL LEDGYNVYQS EAHGLPLRLP QKDSPNQDAT SWGPVRFPLM PGLLHEPQDQ AGFLPPEPPD VGSSDPLSMV EPLQGRSPSY ASLEHHHHHH |
| Tag: | His-tag |
| Predicted MW: | 21.0 kDa |
| Concentration: | lot specific |
| Purity: | >90% by SDS – PAGE |
| Buffer: | Presentation State: Purified State: Liquid purified protein Buffer System: Phosphate Buffered Saline (pH 7.4) containing 10% glycerol. |
| Endotoxin: | < 1.0 EU per 1 microgram of protein (determined by LAL method) |
| Preparation: | Liquid purified protein |
| Storage: | Store undiluted at 2-8°C for one week or (in aliquots) at -20°C to -80°C for longer. Avoid repeated freezing and thawing. |
| Stability: | Shelf life: one year from despatch. |
| RefSeq: | NP_064397 |
| Locus ID: | 56636 |
| UniProt ID: | Q9JJN1 |
| Cytogenetics: | 7 B3 |
| Summary: | Stimulates glucose uptake in differentiated adipocytes via the induction of glucose transporter SLC2A1/GLUT1 expression (but not SLC2A4/GLUT4 expression). Activity probably requires the presence of KLB.[UniProtKB/Swiss-Prot Function] |



[View online »](#)

Product images:



15% SDS-PAGE (3ug)